

NE  T ELETTRA  
MANUAL

THE ITALIAN STYLE DOOR

  
**Dierre**  
YOUR HOME, YOUR LIFE

# Keywords

**FIRMWARE:**

operating software of the electronic cards

**STACK:**

this is the main operating firmware of the Bluetooth® module, the stack manages all security and communication protocols

**APPLICATION:**

it is the secondary operation firmware of the Bluetooth module, the application allows the management of the various card functions

**BOOTLOADER:**

forced operating configuration of the card where it is possible to upgrade the firmware

**PAIRING:**

encrypted coupling with password between devices that communicate via Bluetooth

**MASTER:**

master profile that allows to fully manage the door

**GUEST:**

service profile that has the sole purpose of opening and closing the door

# Content 1/2

<b>Next Elettra concept</b> .....	pag. 1
<b>Main features</b> .....	pag. 2
<b>App Downloads</b> .....	pag. 3
<b>How to manage it</b> .....	pag. 4
<b>Initial configuration “Start up”</b> .....	pag. 7
<b>Home page</b> .....	pag. 12
<b>Advised operations</b> .....	pag. 13
<b>Opening-closing types</b> .....	pag. 15
<b>Dynamic button recap</b> .....	pag. 26
<b>Time bands configuration</b> .....	pag. 27
<b>Remote control management</b> .....	pag. 32
<b>Guest management</b> .....	pag.40
<b>Secondary functions</b> .....	pag. 47
<b>Save/Upload Configuration</b> .....	pag.52
<b>Firmware update procedures</b> .....	pag. 56

## Content 2/2

**Access and Notification control**.....pag.62

**Others**.....pag.67

**FAQ**.....pag.71

## Next Elettra concept



It is a product that aims to combine the minimalist design that brings together the market needs. All electronic plaques are eliminated from the wing, there is only an LED which allows to have status information on the lock. All the management is done via the Dierre myDOOR App and the Bluetooth remote controls.

The Next Elettra project is linked to modularity, in fact the whole logic is not inside the lock, but it is placed in a separate device called myDOOR, located inside the wing, which communicates with Next Elettra.

The concept of key has also been turned into something abstract still giving the possibility, due to habits or emergency, to use the classic manual opening through the use of a proper mechanical key called Easy-Key-Fob.

On the one hand, the ease of use and of installation and, on the other hand, the security of a Bluetooth communication.

In fact, the system uses the safest communication profiles provided for by Bluetooth standard and implements advanced cryptography schemes and algorithms that guarantee protection against the most common electronic and computer attacks of DoS (Denial-of-Service) and MitM (Main-in-the-Middle) types.

# Main features

## Mechanical

- bolts stroke 36 mm
- triple lock type (bolts + 2 deviators)
- integrated lock blocking system trap
- idle latch with engaged lock
- high performance ironless motor

## Electronics

- with no electronic plaques but with status indication LEDs
- active sensors for diagnostics
- advanced sensors to determine various kinds of scenarios
- (\*) 2000mAh NiMH rechargeable buffer battery
- equipped with clean contact in order to be able to be managed by any internal device
- complete motorised opening (bolts + latch)
- Low Energy Bluetooth technology and AES 128 encrypted communication
- fupgradeable firmware OTA (over the air)
- opening/closing complete cycle time approximately 2 seconds

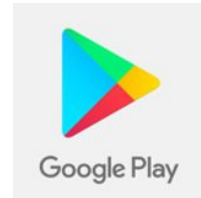
(\*) = Due to security issues, Dierre has chosen to use a NiMH battery instead of a Lilon battery even if the latter has higher performance. The reason generates from the fact that the Lilon battery may catch fire in certain situations, for example following damage to the casing of the cells. In a security product it is therefore better to avoid this battery as the possibility for it to get damaged is very high (in case of a break-in attempt where it could be pierced by the "thief" thus generating a fire in the house).

# App Download

## How to download the myDOOR App

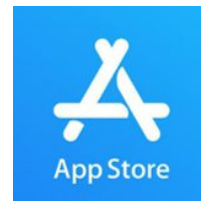
To download the App simply go to:

- **Google Play Store** if you have an Android system



Or

- **Apple Store** if you have an iOS system



Then search the **myDOOR Dierre** app and download it



myDOOR Dierre

# How to manage it 1/3

The management is done entirely through the **myDOOR Dierre App** that can be downloaded from the App Store for iOS systems or from Play Store for Android.

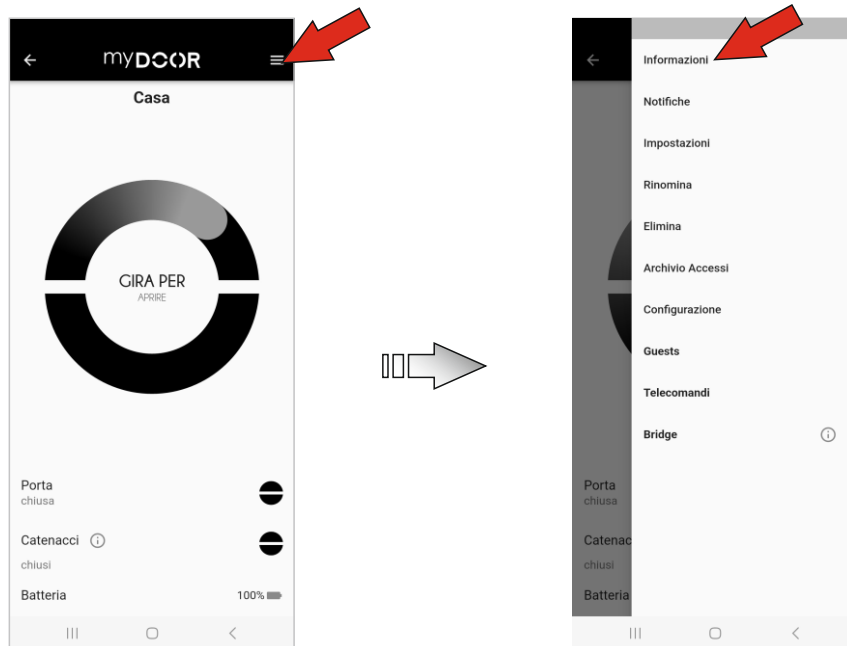
## Locking and unlocking

All locking and unlocking operations can be performed as follows:

- using the **myDOOR Dierre App**

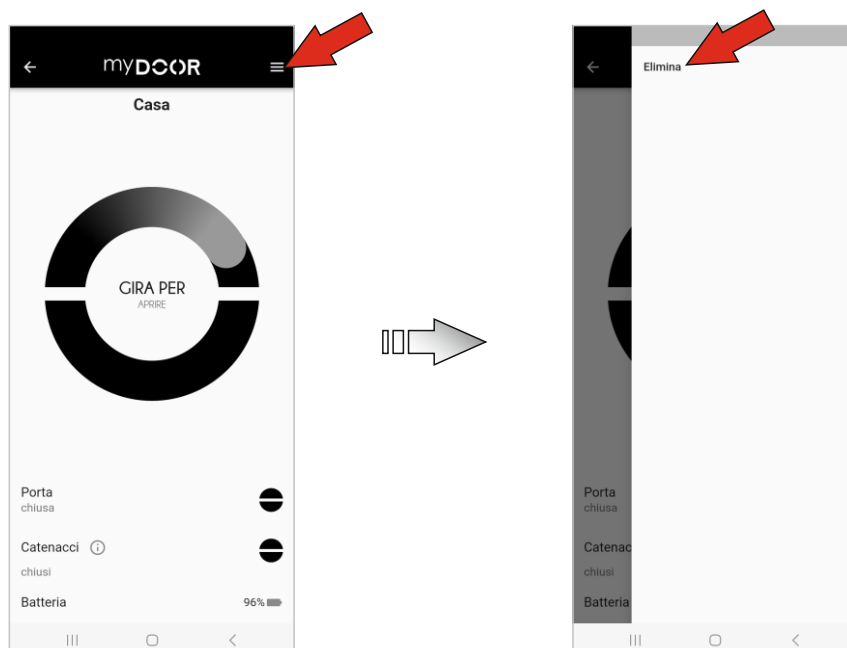
➤ with **MASTER** profile

as well as allowing you to lock and unlock with this profile you can totally manage the configuration of the lock in addition to having access to information about the accesses, alarms, etc.



➤ with **GUEST** profile

this profile allows the user only to lock and unlock the door, it is therefore a service profile that can be eliminated/disabled at any time from the MASTER profile



## How to manage it 2/3

- through **Bluetooth** remote controls

- **Key-Fob**



*Key-Fob*

It is a service radio control that can be eliminated/disabled at any time from the MASTER profile, it is equipped with a single button with different functions and an informative LED. Battery life about 15000 cycles.

- **Easy-Key-Fob**



*Easy-Key-Fob*

It is master radio control that can be eliminated/disabled at any time from the MASTER profile and is in any case equipped with flip key (as in cars) to be able to mechanically release the lock anytime, it is equipped with a single button having several functions and an informative LED.

Battery life about 15000 cycles.

- through **Bluetooth** remote controls

- **Remote-Key-Fob**



*Remote Key-Fob*

It is a device that maintains all the features of Key-Fob having different applications inside the house that in any case converge to the single locking/unlocking management functions of the door. It can be battery powered (15000 cycles) or from the network through a common 5V/DC power supply or ordering the dedicated power supply that has the suitable and tested characteristics with the Remote-Key-Fob, as it communicates via Bluetooth it must always be installed in the vicinity of the door previously checking the operation with the distance from the door itself. If installed visible on a wall you can use it as an ordinary internal button.

With this application you can also manage it by connecting it to any object that may

## How to manage it 3/3

close a clean contact, such as:

- electrical outlet
- intercom
- home automation system
- etc.

This management can be done even if you choose to install the Remote-Key-Fob inside the wall and not in view, for example in a switch.

It can also be installed directly on the door but in this case it cannot be activated by any external object and will be limited to the operation as a battery-operated internal button.

### - through any device installed on the door

#### ↻ **Fingerprint reader / numeric keypad**

The various compatible devices (fingerprint reader and numeric keypad) are managed in parallel to Next Elettra and are thus not configured through the myDOOR App, for more details please refer to the specific manuals supplied separately.



*INTEGRA Fingerprint reader*



*Numeric keypad*



*DLINE Fingerprint reader*

### - through a key

#### ↻ **Fixed key D-Up or Easy Key-Fob**



*D-Up fixed key*



*Easy Key-Fob key*

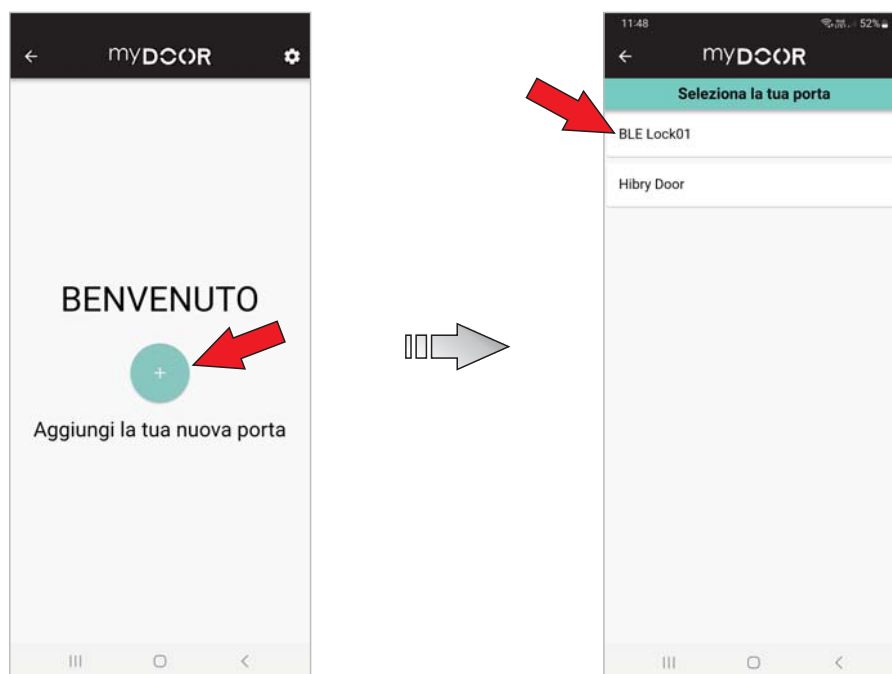
At any time you can lock/unlock the door using the supplied mechanical keys, in fact the electronic part operates in parallel to the mechanical one and no procedure is therefore necessary to switch from one type of use to another.

# Initial configuration

## Start up 1/5

### First connection

Open the App and search for the device that from factory settings is named “**BLE Lock01**”.



The alphanumeric password is then requested to access the management of the lock as **MASTER**, the default password is **master**.

Select the lock and consequently enter the numeric password for **PAIRING** for the association (this operation is necessary to ensure security against MITM attacks and should be performed whenever a new iOS or Android device must be associated), the default password is **987654**.

The App will autonomously require modification of the password for security reasons, once changed they must be remembered by the user since, in the event they were forgotten, it would be necessary to reset them.

In order to be able to change the password just follow the indications given by the app via pop-up.

WARNING: after changing the PAIRING password it is necessary to dissociate the "DRL-BLE Lock01" lock from the native Bluetooth menu of the device that you are using and then make the association with the new password.

After you have modified the various passwords it is possible to begin navigating within the lock menu.

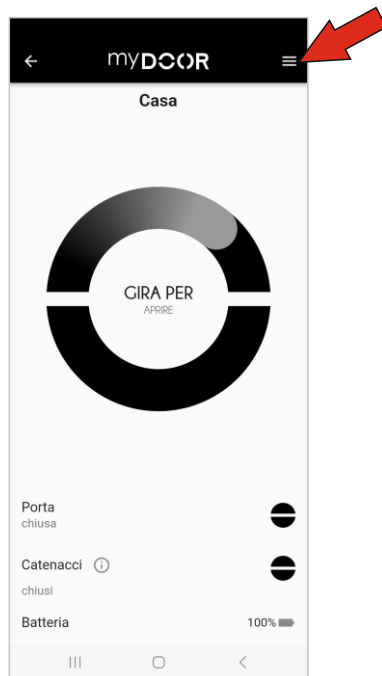
The MASTER password is unique and can be used by multiple devices in order to access the configuration of the lock, it is recommended to distribute such authorization to a small number of users, preferably 1 only.

It is necessary to set the date and time of the lock, these will be aligned to those of the device one is connected with.

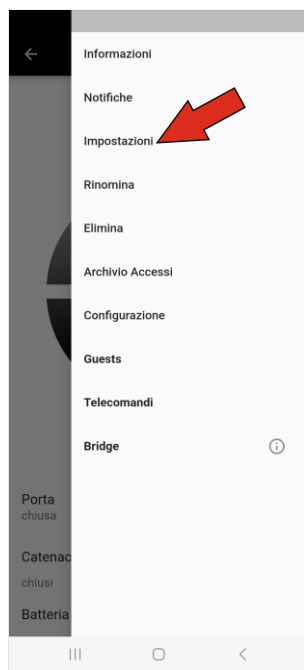
# Initial configuration

## Start up 2/5

Just access the menu by pressing the 3 line button on the top right in the Home Page of the App



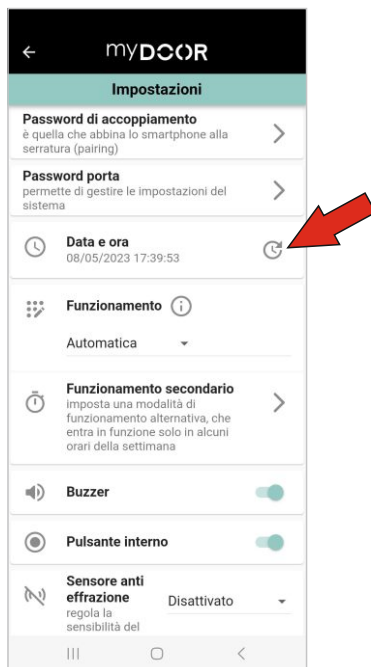
Select the item "Settings"



# Initial configuration

## Start up 3/5

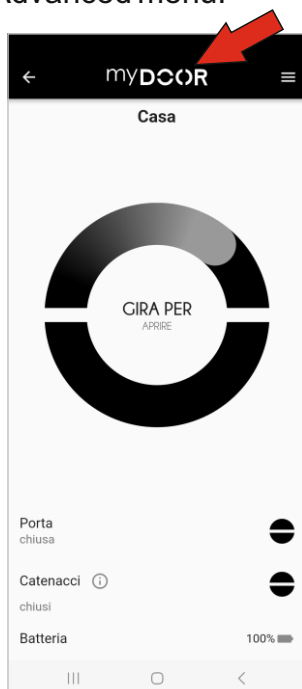
Press on the “Update” button to the side of the “Date and time” indication



At this point the myDOOR device is aligned to the date and time of the device the synchronization was made with.

Then perform the diagnostic operation to verify that all operating parameters are within the standard so as to intervene with the product registration in case they were not within the standard. This operation is protected by a password and it is the responsibility of the authorized technician Dierre.

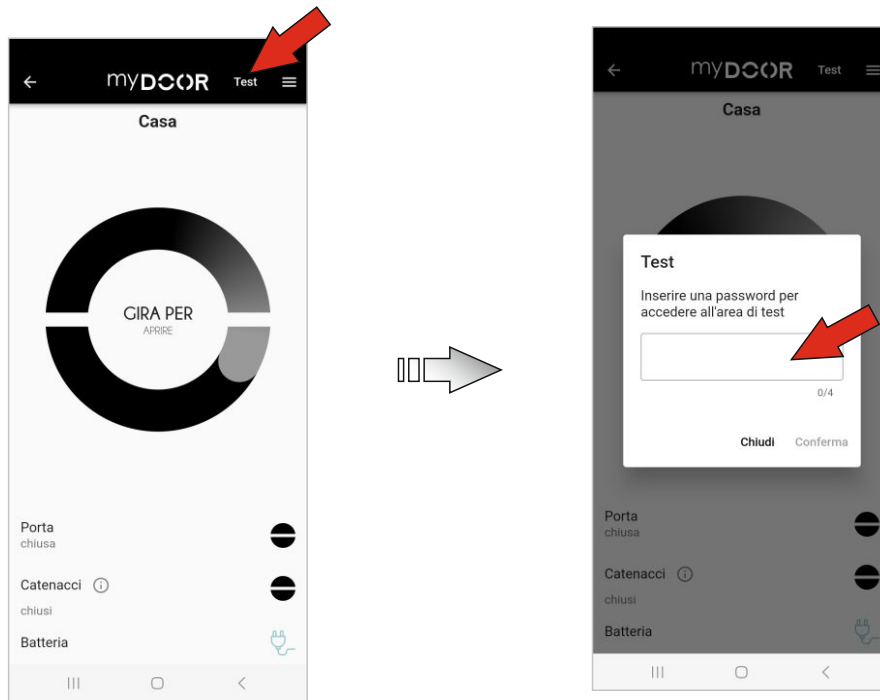
With the master profile, in the Home Page of the App, press 9 or more times on the same area in the myDOOR logo to access the Advanced menu.



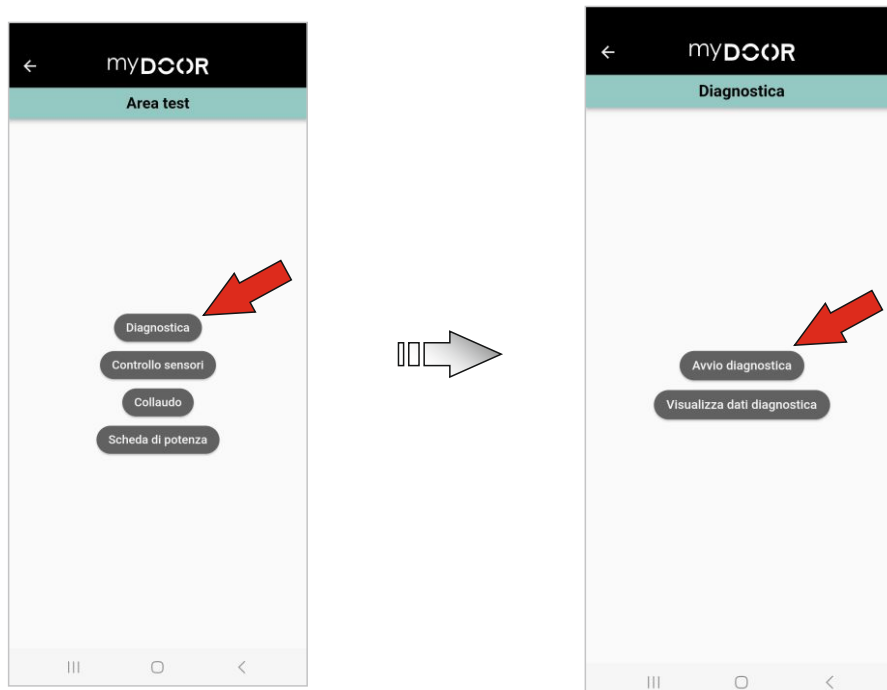
# Initial configuration

## Start up 4/5

"Test" will appear on the top right, before pressing it to access the test area, make sure that the bolts are in an "open" status, if they were closed perform the opening through the App and not manually, it is also necessary for the door to be in the semi-automatic mode 1 or semi-automatic mode 2 (see chapter LOCKING/UNLOCKING TYPES). Then enter the access password to the Advanced area



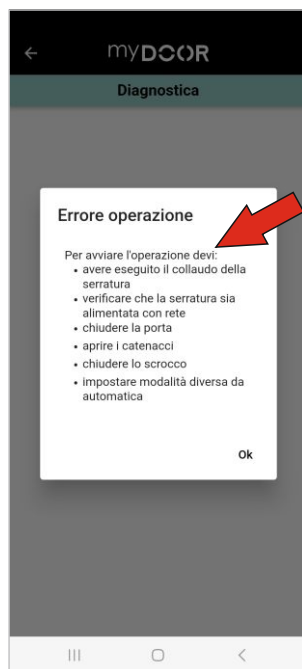
Then press the "Diagnostics" button and then click "Start Diagnostics".



## Initial configuration

### Start up 5/5

Warning: For the test to start, it is necessary for the door to be locked, the bolts open, the power on. It is also important to set a mode other than automatic and that the latch is protruding. To this regard, where even only one of three conditions is not true, the App will give a check invitation message.



Then wait for the test to run. During the test audio and visual signals will be given, if the LED generates green flashes it means that the test is proceeding correctly, if a malfunction occurs the LED will flash red, fault alarms will be heard and on the App it will be possible to verify the presence of specific alerts. In this case at the end of the cycle it will be possible to view the results on your smartphone or it will be possible to send them via e-mail.



If faults have occurred, proceed with the reading to interpret the results, otherwise move to the next chapter.

# Home page 1/1

## Identification of home page fields

Fields on the home page screen:

- Dynamic button (for the opening/closing management of bolts and latches)
- Door name
- Door status (opening/closing)
- Bolts status (open/half closed/closed)
- Battery status
- Access to the menu
- myDOOR Logo (for access to advanced settings)

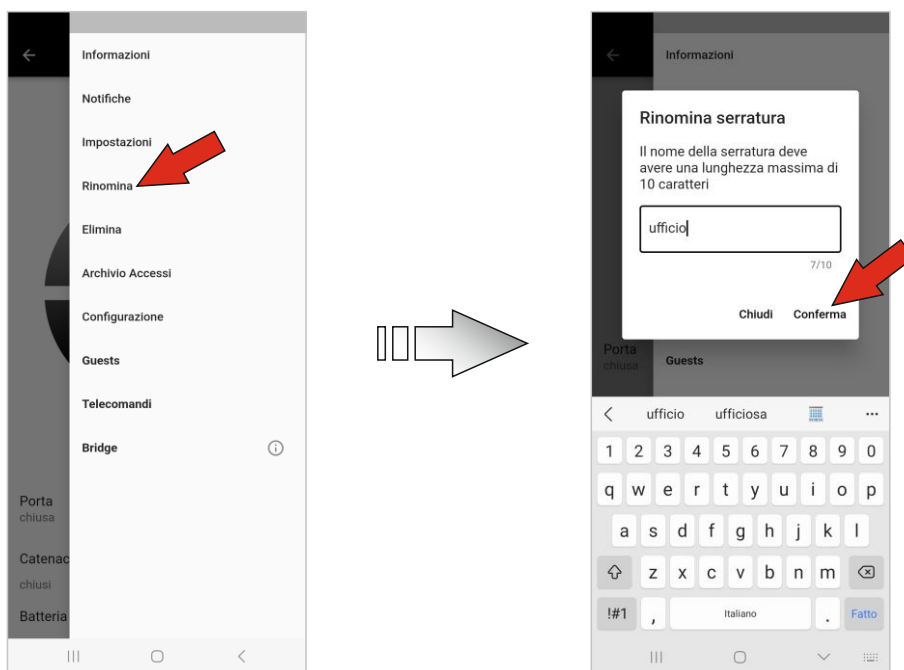
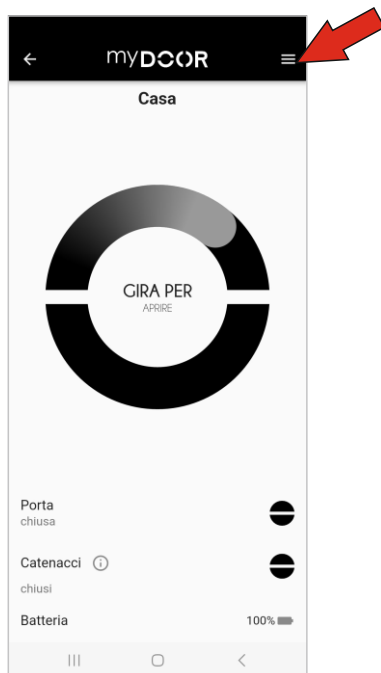


## Advised operations 1/2

### Change of lock name

We recommend that you change the name of the lock first so that it can be easily identified in the future. The name can be alphanumeric with a maximum of 10 characters and is automatically preceded by the prefix "DRL-" which is necessary for an initial identification of the lock.

Simply access the menu by pressing the button with the 3 lines at the top right of the App Home Page



At this point the **myDOOR** device has been renamed and this name will be the reference for the external devices searching for it.

## Advised operations 2/2

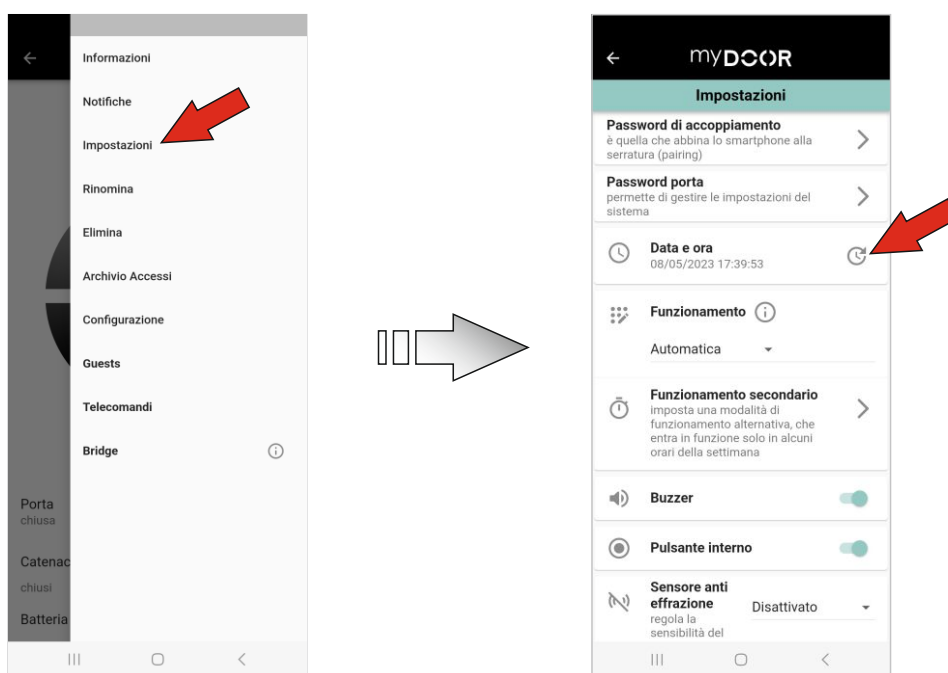
### Date and time setting

The date and time can be set by synchronizing the lock with the device used for configuration.  
*WARNING: in the event of a power failure and a complete discharge of the battery, it is necessary to connect to the lock to set the time again.*

Simply access the menu by pressing the button with the 3 lines at the top right of the App Home Page



Then select “Settings” and press the “Update” button alongside the indicated “Date and Time”



At this point the **myDOOR** device is aligned with the date and time of the device with which the synchronization was made.

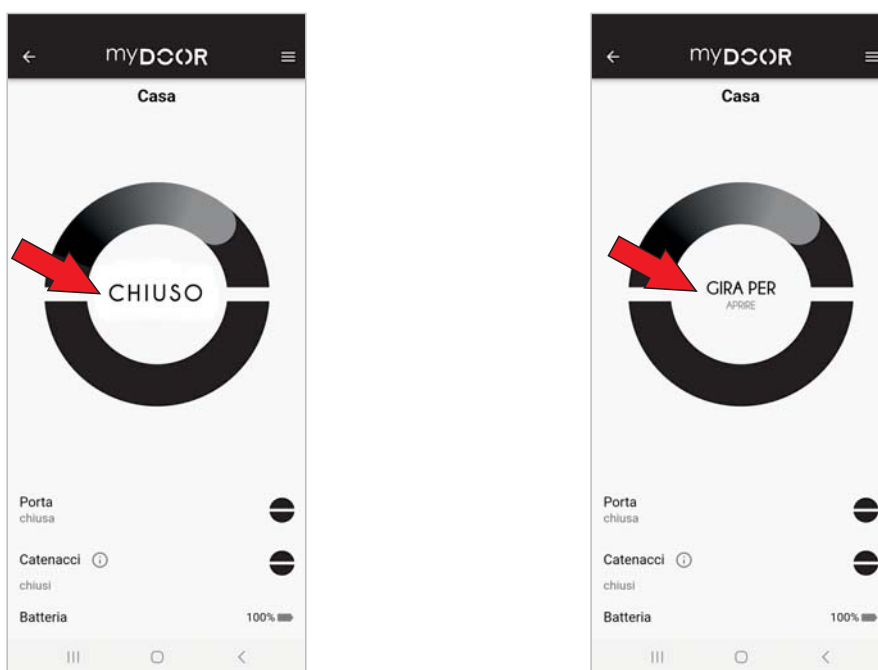
# Opening-Closing types 1/11

## Opening / closing mode

There are **5 distinct opening / closing modes** that can be set from the menu:

### ➤ AUTOMATIC

This mode can be used with any handle configuration. The lock locks automatically each time the door is closed, in this way you are sure to always be safe. If the lock is locked, upon receipt of an opening impulse, it performs a complete cycle retracting the latch as well, and if the door is not closed after 20 seconds (settable interval) it locks automatically. It is possible to anticipate the closure of latches and bolts with any impulse. By connecting with the door closed, you will find the status information "CLOSED" alternating with "TURN TO OPEN", simply turn the icon clockwise to open.



Once this is done, the door will remain open for 20 seconds (settable interval) indicating the "OPEN" status on the App Home Page



## Opening-Closing types 2/11

Once closed, it will return to the "CLOSED" status alternating with "TURN TO OPEN"



Opening can also take place via an associated radio control (if you are within the coverage area of the Bluetooth signal) or via the associated remote button, simply press the button for between 0.1\* and 5 seconds and then release it to open.

The device status LED starts to flash blue and finally to green if the impulse from the lock is accepted, or with a red flash if the impulse is not accepted

**Note:**

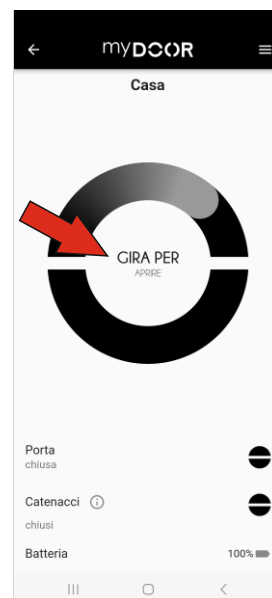
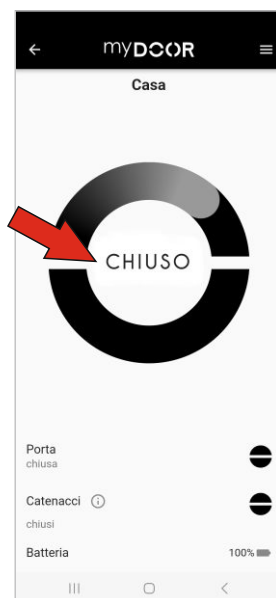
(\*) = The buttons can be accidentally pressed (for example when the remote control is left in your pocket) operating the devices to which they are associated (in this specific case, opening the door without actually wanting to).

For this reason, for safety purposes, Dierre has set the product in such a way that it does not instantly activate when pressed, thus discriminating against "accidental presses".

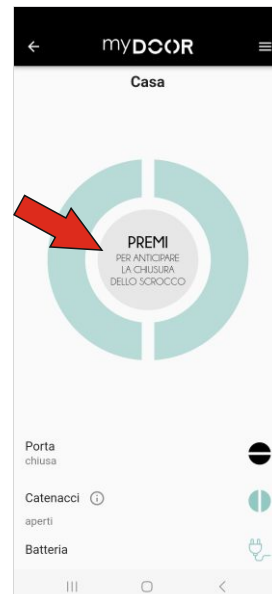
## Opening-Closing types 3/11

### ⇒ SEMI-AUTOMATIC (Type 1)

WARNING: this mode can be used with the rotating knob or external handle configuration. The lock does not lock automatically since a locking impulse is required, in this way it is possible to open and close the door without having to operate the lock each time, in fact simply manually operate the latch and give the impulse to lock the lock only if necessary. If the lock is locked, upon receipt of an opening impulse, it performs a complete cycle retracting the latch as well, and if the door is not closed after 20 seconds (settable interval), just the latch is automatically closed again. The closing of the latch can be advanced with any impulse. By connecting with the door closed, you will find the status information "CLOSED" alternating with "TURN TO OPEN", simply turn the icon clockwise to open.



Once this is done, the door will remain open for 20 seconds (settable interval) indicating the "OPEN" status alternating with "PRESS TO ADVANCE THE CLOSURE OF THE LATCH" on the App Home Page

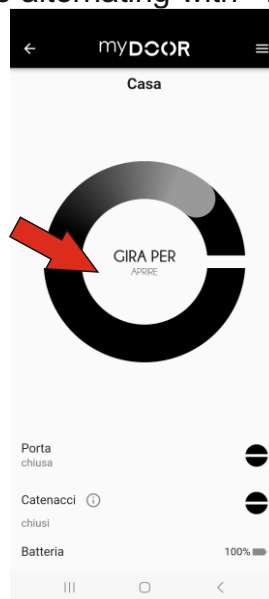
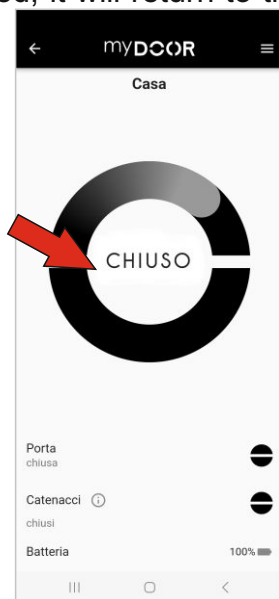


## Opening-Closing types 4/11

Once closed, only the latch will be reset, indicating the "TURN TO CLOSE" status, simply turn the icon anti-clockwise to close.



Once closed, it will return to the "CLOSED" status alternating with "TURN TO OPEN"



Opening and closing can also take place via an associated radio control (if you are within the coverage area of the Bluetooth signal) or via the associated remote button, simply press the button for between 0.1\* and 5 seconds and then release it to perform total opening, closing of the bolts or advanced closing of the latch.

The device status LED starts to flash blue and finally to green if the impulse from the lock is accepted, or with a red flash if the impulse is not accepted.

**Note:**

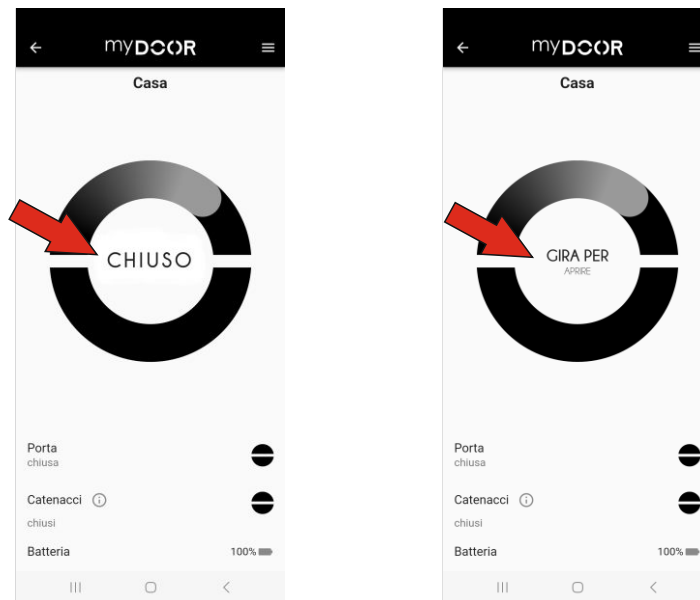
(\*) = The buttons can be accidentally pressed (for example when the remote control is left in your pocket) operating the devices to which they are associated (in this specific case, opening the door without actually wanting to).

For this reason, for safety purposes, Dierre has set the product in such a way that it does not instantly activate when pressed, thus discriminating against "accidental presses".

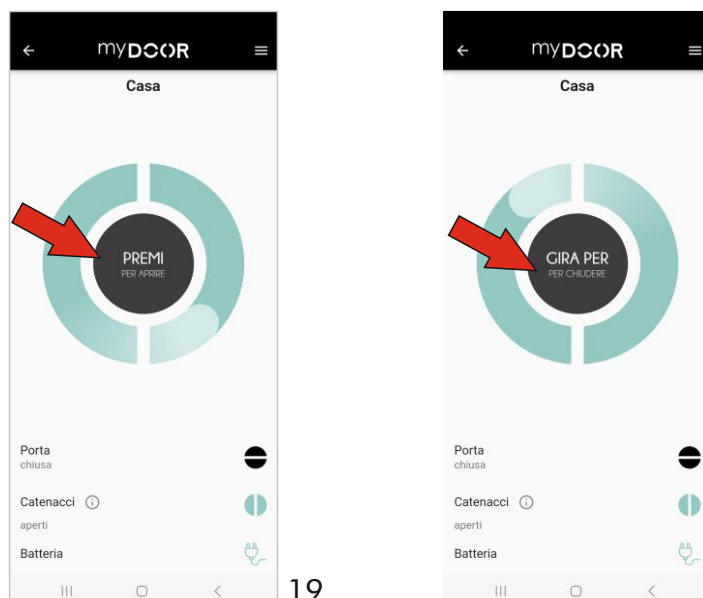
# Opening-Closing types 5/11

## ⇒ SEMI-AUTOMATIC (Type 2)

WARNING: this mode can be used with the external fixed knob or fixed handle fittings configuration and is not compatible with devices installed on the door (e.g. fingerprint reader). The lock does not lock automatically but a closing impulse is required, furthermore the latch can be activated by an opening impulse creating an "electric release" type management, in this way the door can be opened and closed in a motorized manner without having to operate the turns every time. If the lock is locked, upon receipt of an opening impulse, it executes the cycle without retracting the latch, and upon receipt of a further opening impulse the latch is retracted, if the door is not closed after 20 seconds (settable interval) just the latch automatically closes. The closing of the latch can be advanced with a closing impulse. By connecting with the door closed, you will find the status information "CLOSED" alternating with "TURN TO OPEN", simply turn the icon clockwise to open.

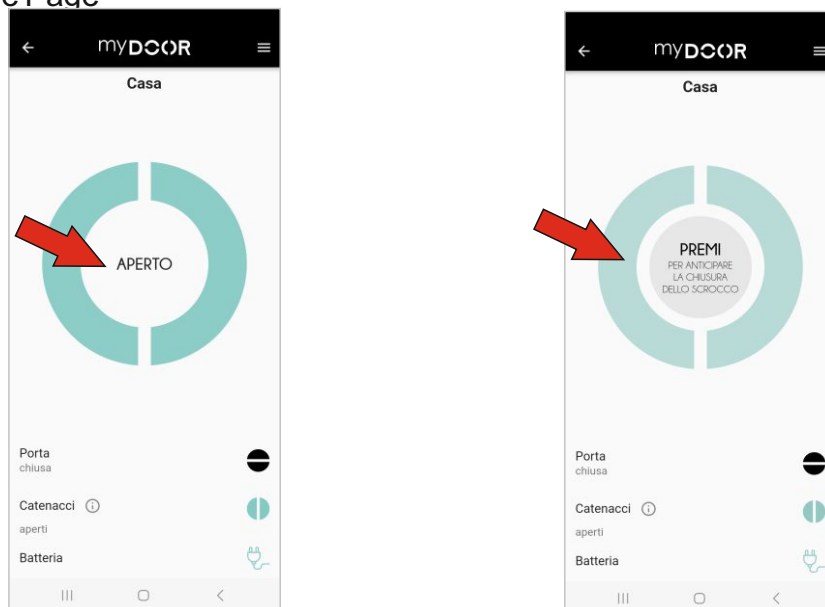


Once this is done, the door will remain with just the latch inserted in the frame, signalling the status "PRESS TO OPEN" alternating with "TURN TO CLOSE" on the App Home Page. In the first case the latch is retracted and the door opens, in the second case the bolts are reset. These screens are proposed each time the door is closed with just the latch.

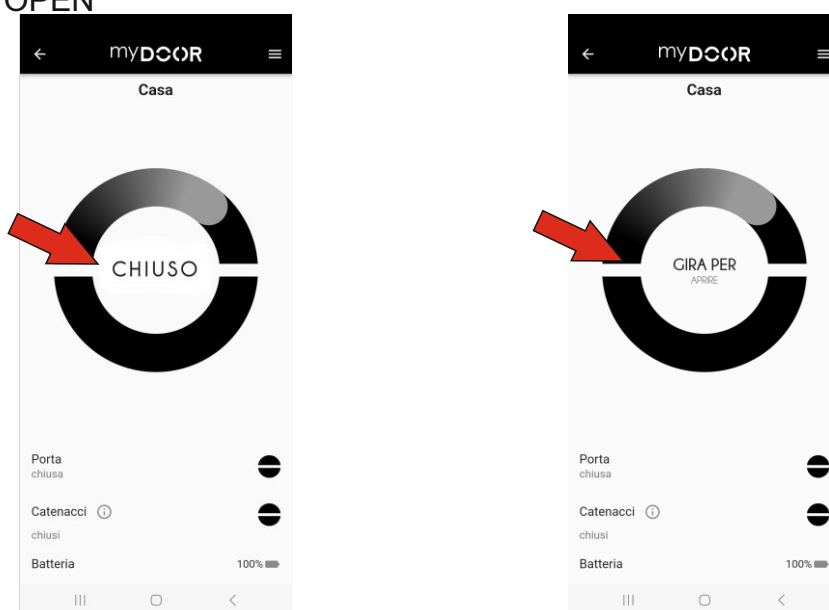


## Opening-Closing types 6/11

By retracting the latch, the door will remain open for 20 seconds (settable interval), signalling the "OPEN" status alternating with "PRESS TO ADVANCE THE CLOSURE OF THE LATCH" on the App Home Page



Instead, by closing the bolts the door will reset, signalling the "CLOSED" status alternating with "TURN TO OPEN"



Opening and closing can also take place via an associated radio control (if you are within the coverage area of the Bluetooth signal) or via the associated remote button. To open the bolts or the latch simply press the button for between 0.1\* and 2 seconds and then release it. If, on the other hand, you want to close the bolts or advance the closure of the latch, simply press the button for between 2 and 5 seconds and then release it.

In both cases the device status LED starts to flash blue and finally to green if the impulse from the lock is accepted, or with a red flash if the impulse is not accepted.

**Note:** (\*) = The buttons can be accidentally pressed (for example when the remote control is left in your pocket) operating the devices to which they are associated (in this specific case, opening the door without actually wanting to). For this reason, for safety purposes, Dierre has set the product in such a way that it does not instantly activate when pressed, thus discriminating against "accidental presses".

## Opening-Closing types 7/11

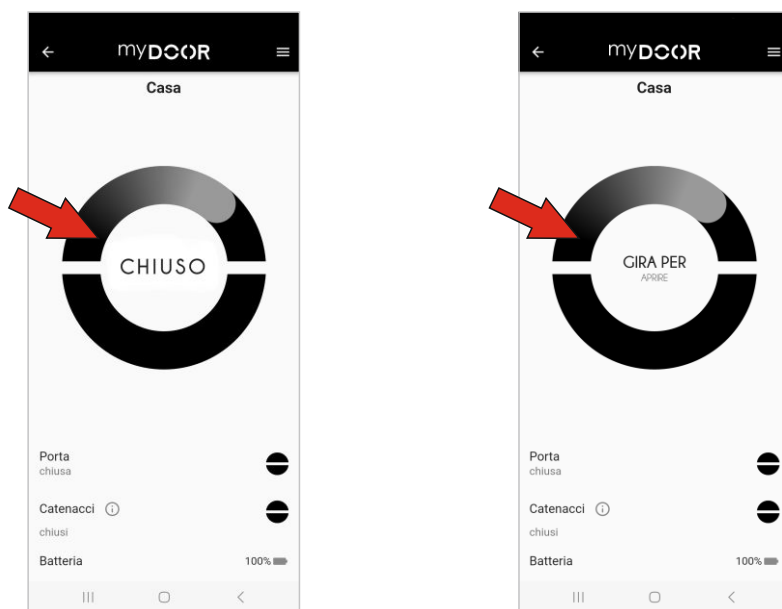
### ⇒ SEMIAUTOMATIC (Type 3)

PLEASE NOTE: this mode can be used with the handle configuration having rotating knob or handle on the outside.

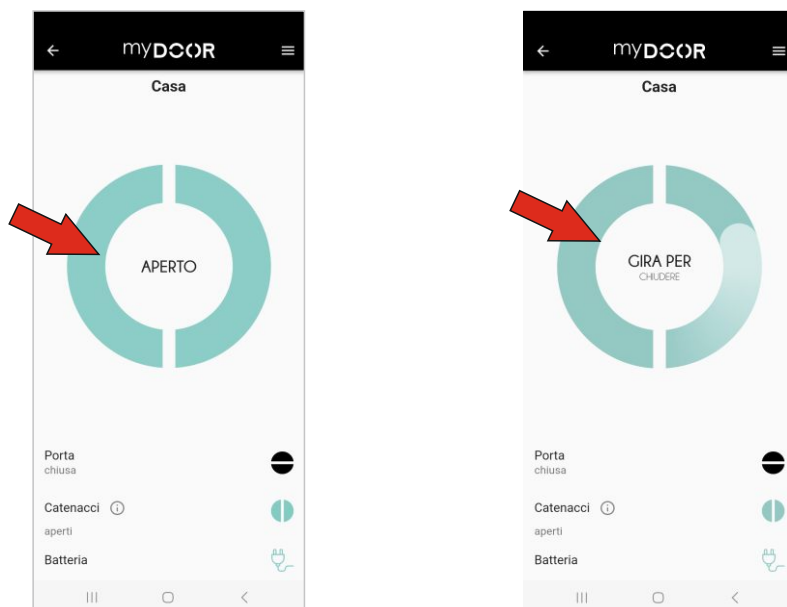
Each time the door is set ajar, the lock closes automatically. This ensures that the lock is always secure. The latch cannot be operated without the handle or key.

If the lock is closed, on receiving an opening impulse, it performs the opening cycle without pulling the latch. If the door is not moved, it will close again after 10 seconds (settable period).

When the door is closed, the status information "CLOSED" alternates with "TURN TO OPEN", to open simply turn the icon clockwise.

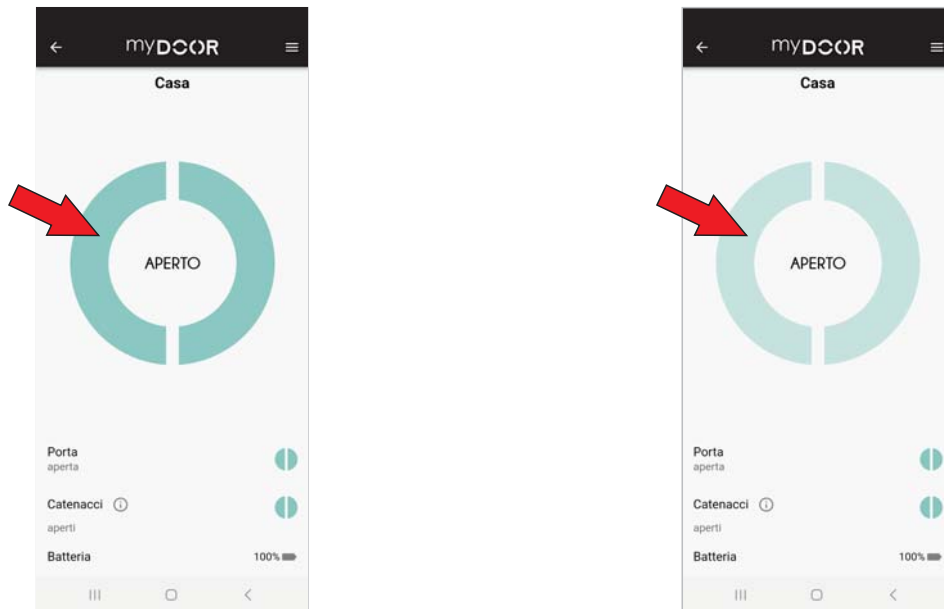


Once this has been done, the door will remain open for 10 seconds (settable period), displaying the status "OPEN" alternating with "TURN TO CLOSE" on the App Home Page.



## Opening-Closing types 8/11

If the door leaf is opened manually in the meantime, the "OPEN" status will be displayed with the blue flashing circle.



The door can also be opened and closed using an associated radio remote control (if you are in the Bluetooth signal coverage area) or via the associated remote button, simply press the button for between 0.1\* seconds and 5 seconds and then release it to open and close the bolts.

The device status LED starts flashing blue and then turns green if the impulse from the lock is accepted and ends with a red flash if the impulse is not accepted.

### ➔ MANUAL

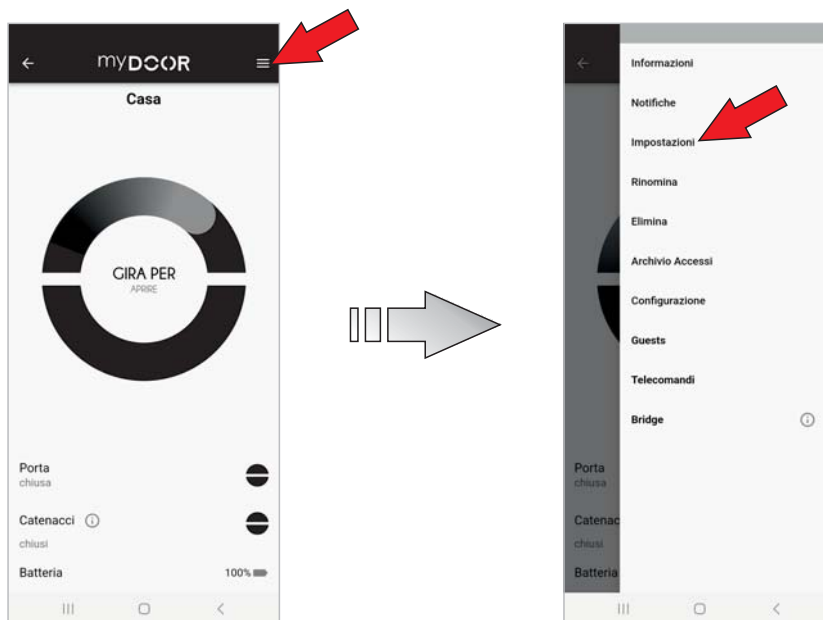
The lock disables the use of the electric motor and can therefore only be operated mechanically. (Available on locks manufactured from the year 2025 onwards)

**Note:** (\*) = The buttons can be accidentally pressed (for example when the remote control is left in your pocket) operating the devices to which they are associated (in this specific case, opening the door without actually wanting to). For this reason, for safety purposes, Dierre has set the product in such a way that it does not instantly activate when pressed, thus discriminating against "accidental presses".

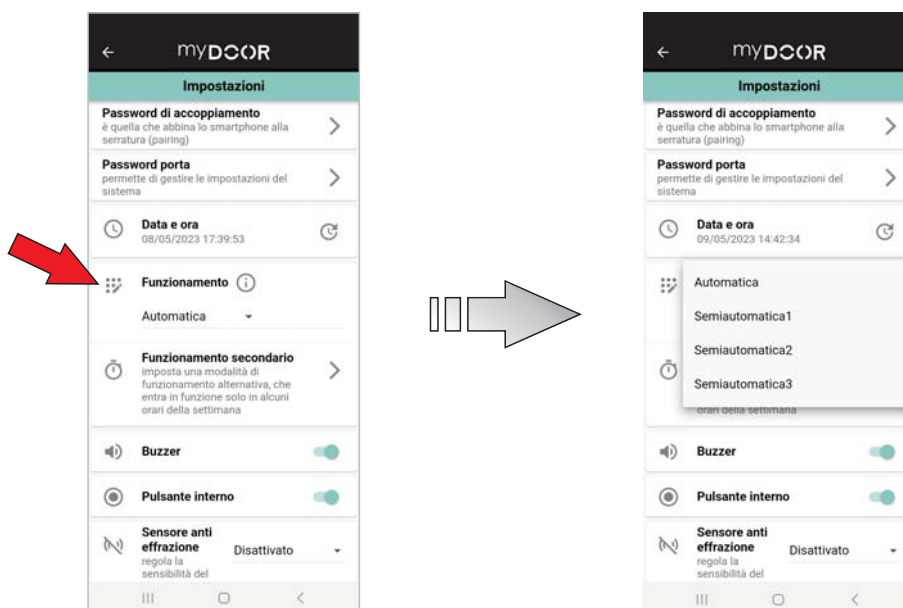
# Opening-Closing types 9/11

One of the 5 modes can be set simply by selecting it from the menu.

Simply access the menu by pressing the button with the 3 lines at the top right of the App Home Page and select "Settings".



Press the "Operation" button and select the desired mode

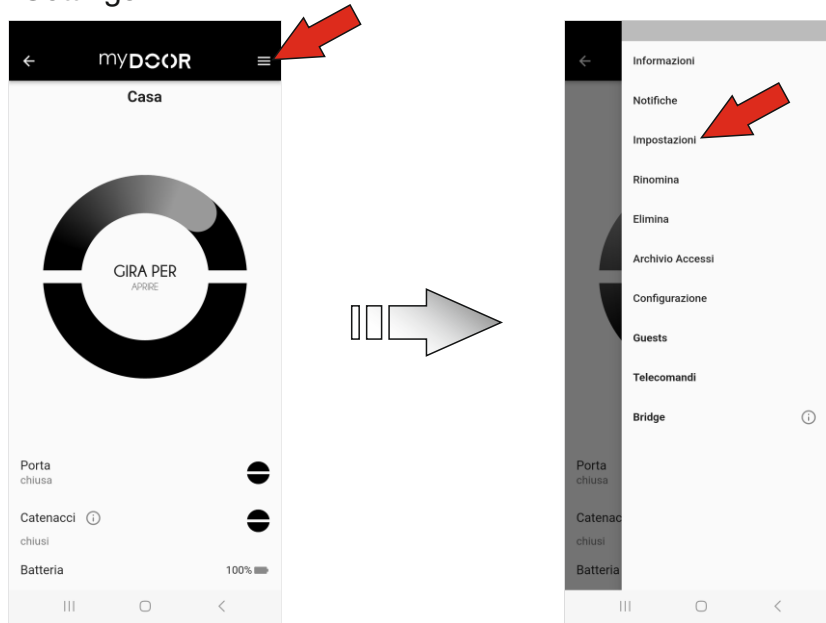


At this point, the **myDOOR** device is set with the opening mode chosen for the main operation.

# Opening-Closing types 10/11

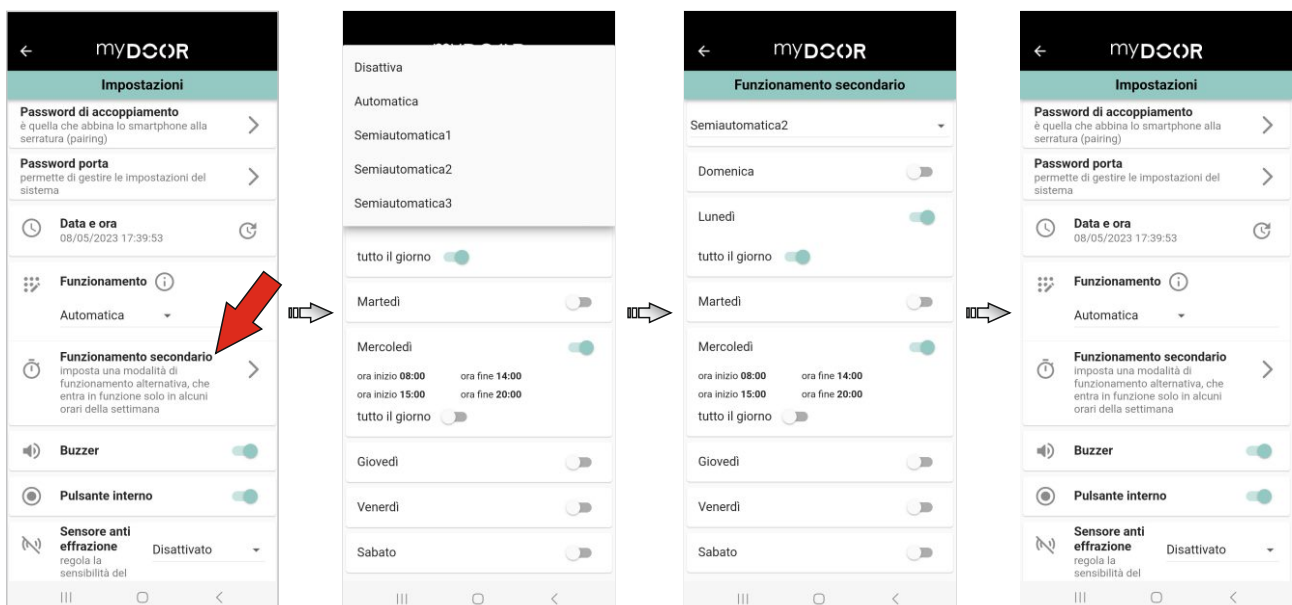
You can set a "Secondary operation" as well.

Simply enter the menu by pressing the 3-line button on the top right of the App Home Page and select the item "Settings".



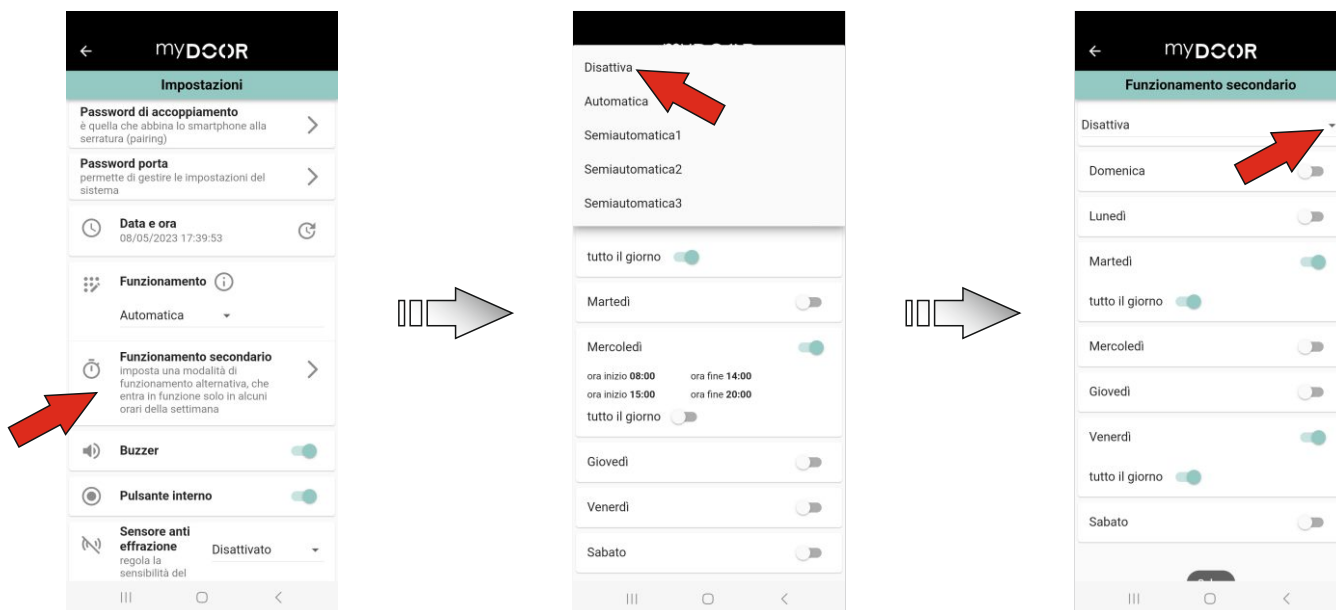
Then press the selector on the item "Secondary operation" to enter the menu to set the time frames within which this unlocking mode will be active (you can set it by pressing the button "CHANGE SECONDARY").

Then, set the time frames based on your needs (see the chapter "Time frame Configuration") and afterwards press the button SET to activate the secondary operation in the specific time frames defined.



# Opening-Closing types 11/11

To de-activate the secondary operation simply enter again this part of the menu and press the button DE-ACTIVATE.



# Dynamic button recap 1/1

## Use of the dynamic button for opening/closing

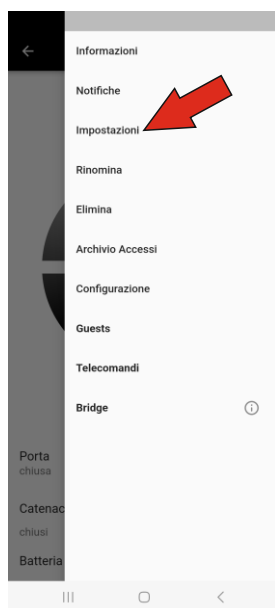
The use of the dynamic button on the App Home Page (see chapter "Identification of home page fields") is easy and intuitive. Depending on the opening mode set, simply turn the button clockwise to open the bolts and anti-clockwise to close them, in "Automatic" and "Semi-automatic 1" mode, the opening is completed by retracting just the latch while in "Semi-automatic 2" mode, at the end of the bolts opening cycle, the central button is activated to manage the latch (more information is available in the previous chapter "opening-closing mode").



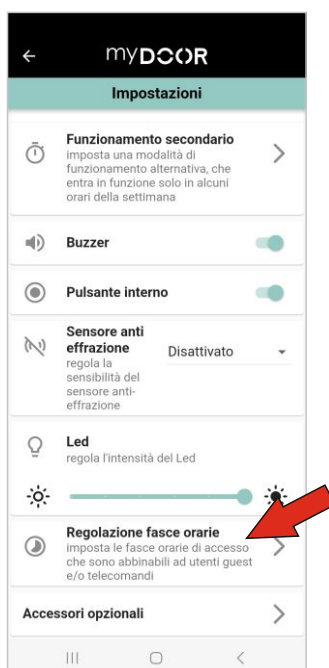
# Time bands configuration 1/5

## Time bands management

Up to 5 time bands can be managed in which Guests and remote controls are enabled. The settings are given weekly and 2 different bands can be defined for each day. Simply access the menu by pressing the button with the 3 line at the top right of the App Home Page and select "Settings"

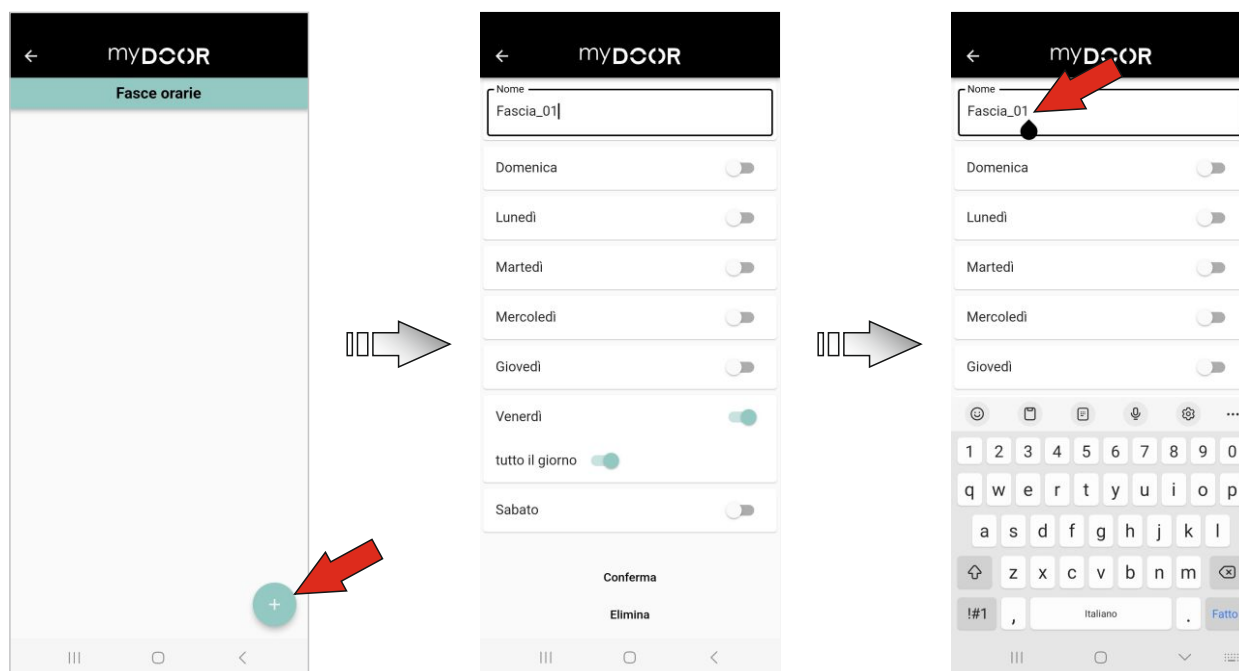


Press the "time band adjustment" button at the bottom of the page to access the list of time bands



## Time bands configuration 2/5

To add a time band press the (+) button, change the name of the band by pressing on the default name and proceed with the setting.



Select the days on which you want to authorize the Guest and radio control opening that will be part of this band. To do this, simply move the cursor of the chosen day and 2 possibilities will be automatically given:

### ➤ Authorize opening at well-defined times

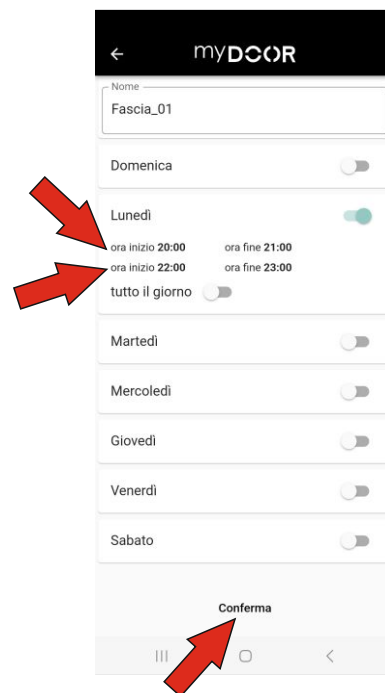
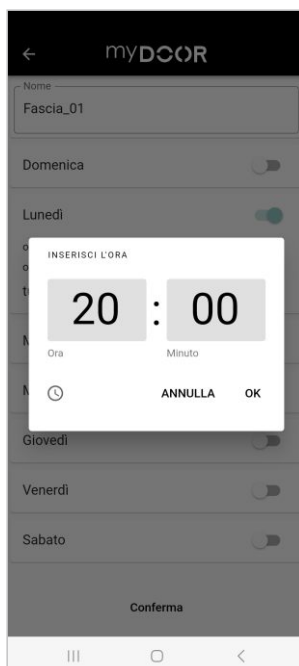
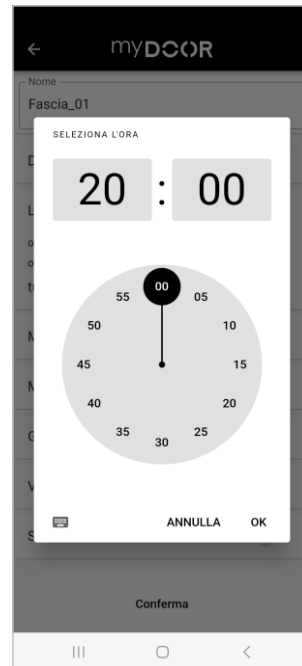
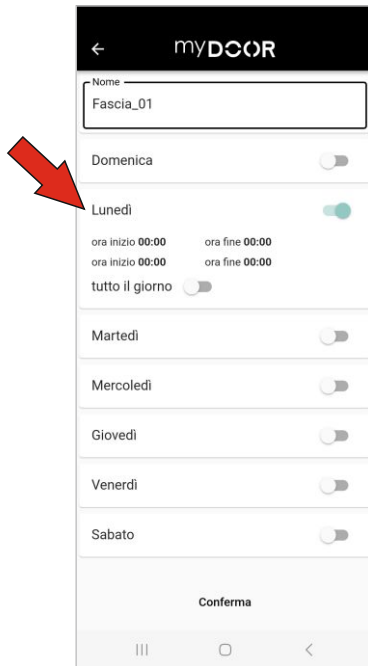
Select the start and end times of the authorized interval (up to a maximum of 2 intervals) and press the "set" button to make the changes to the band effective.

For example, in the case shown below, the authorization for opening was given on Monday only from 20.00 to 21.00 and from 22.00 to 23.00.

This means that outside these 2 bands on Monday, guests and radio controls belonging to the band named "Band\_01" cannot interact with the door, neither to

# Time bands configuration 3/5

open it nor to close it.

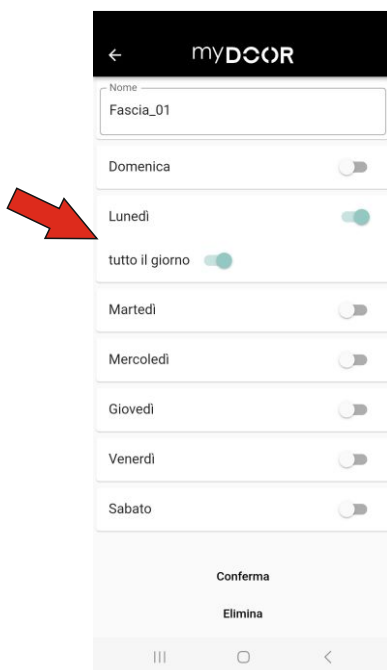


## Time bands configuration 4/5

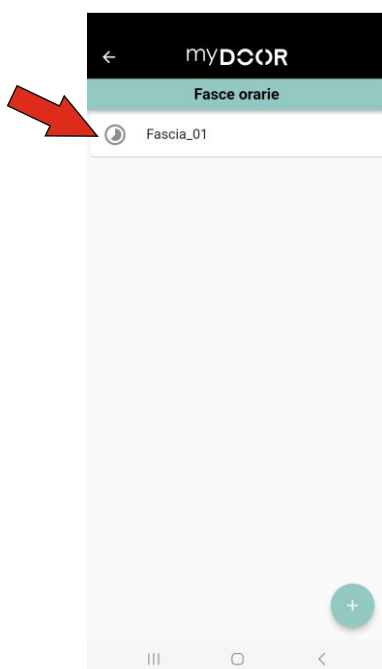
### ➤ Authorize opening for the whole day

Selecting "All day" authorizes Guests and radio controls belonging to the band to interact with the door for the entire day selected.

The "set" button must be pressed in order to make the changes to the band effective.



After the setting has been made, the report will be shown in the list of time bands, specifically the number of bands present with respect to the maximum number possible, the name of the band and the days on which the band is operating. For details on the times it is necessary to press on the band itself to enter the specific settings.



## Time bands configuration 5/5

You can delete a time band directly from the list (by pressing the bin icon with Android or by dragging it to the left with iOS). When a time band is deleted, all the Key-Fobs and Guests associated with it are disabled by default, therefore, to enable them it is necessary to promptly manage them via the specific menus.

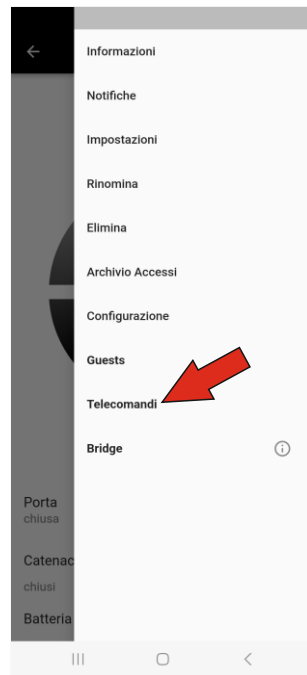


# Remote control management 1/8

## Entering new remote controls / remote buttons

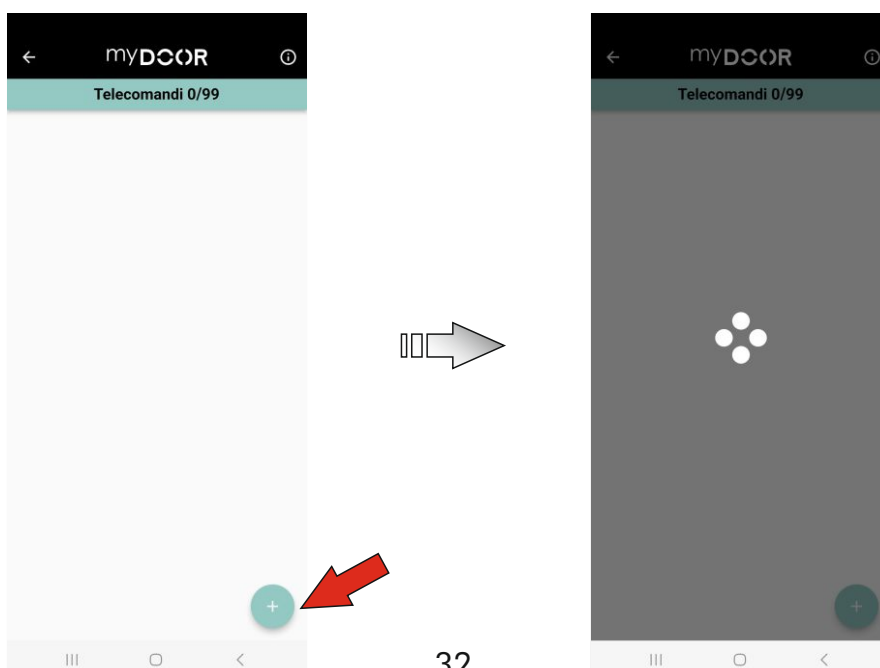
Up to 99 remote controls/buttons can be entered, each of them identified with its own name so that it can be easily recognized, and it can also be associated with a specific time band.

Simply access the menu by pressing the button with the 3 line at the top right of the App Home Page and select "REMOTE CONTROLS"



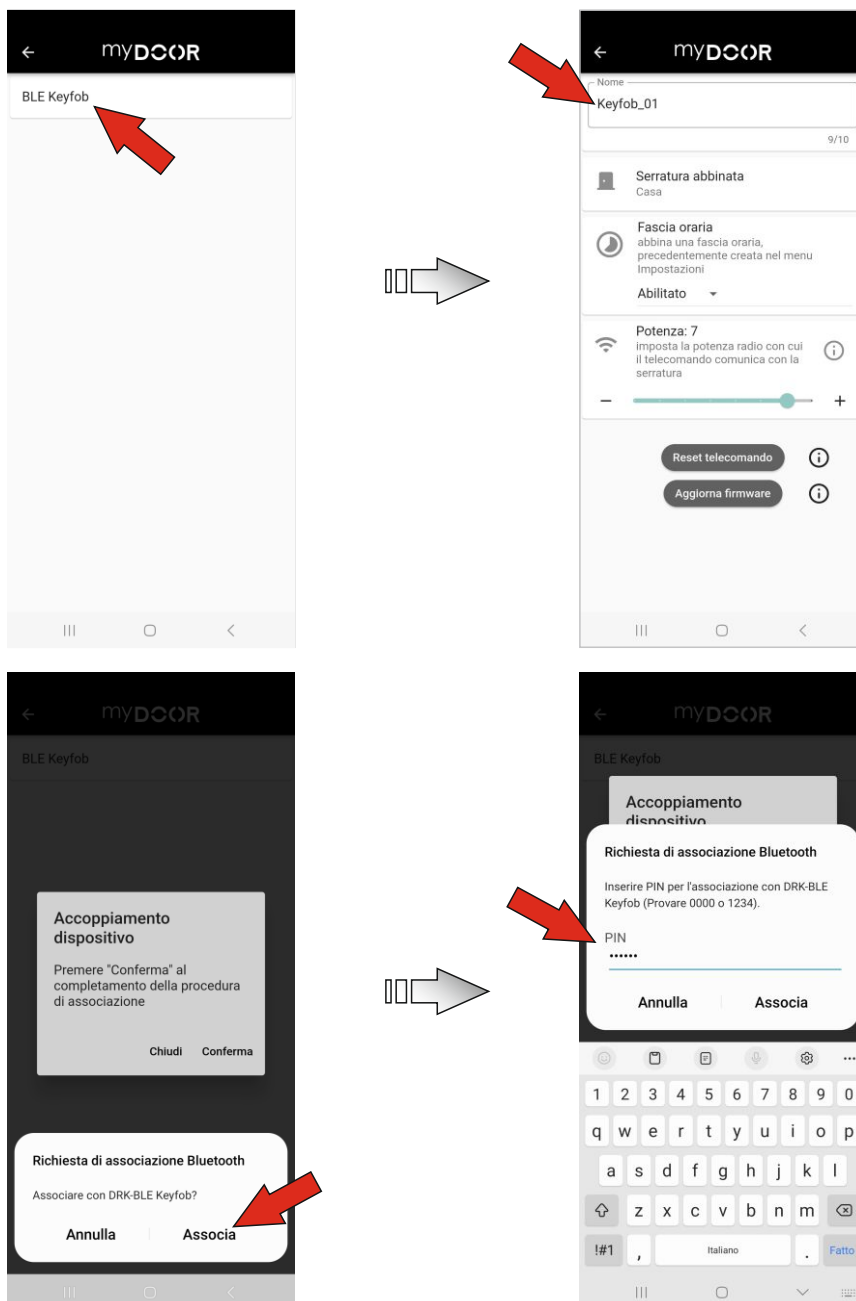
To add a remote control, you need to have it with you, then proceed as follows:

- **press the remote control button for at least 5 seconds**
- **releasing the button, the remote control LED will start flashing green**
- **then press the (+) button at the bottom right of the App and wait for the device search**



## Remote control management 2/8

- the search result is then shown
- if the remote control is configured with the factory settings, it is identified with the name "BLE Keyfob" (otherwise with the name that has been assigned to it)
- select the remote control to access the specific menu of the Key-Fob (once the connection is established the green LED will flash much faster)
- the pairing password to associate the smartphone with the Key-Fob must be entered via the pop-up window, the default password is 987654
- through an additional pop-up window it is necessary to accept to force the password change, automatically pairing it with that of the lock (if you do not accept the Key-Fob it will not be usable)

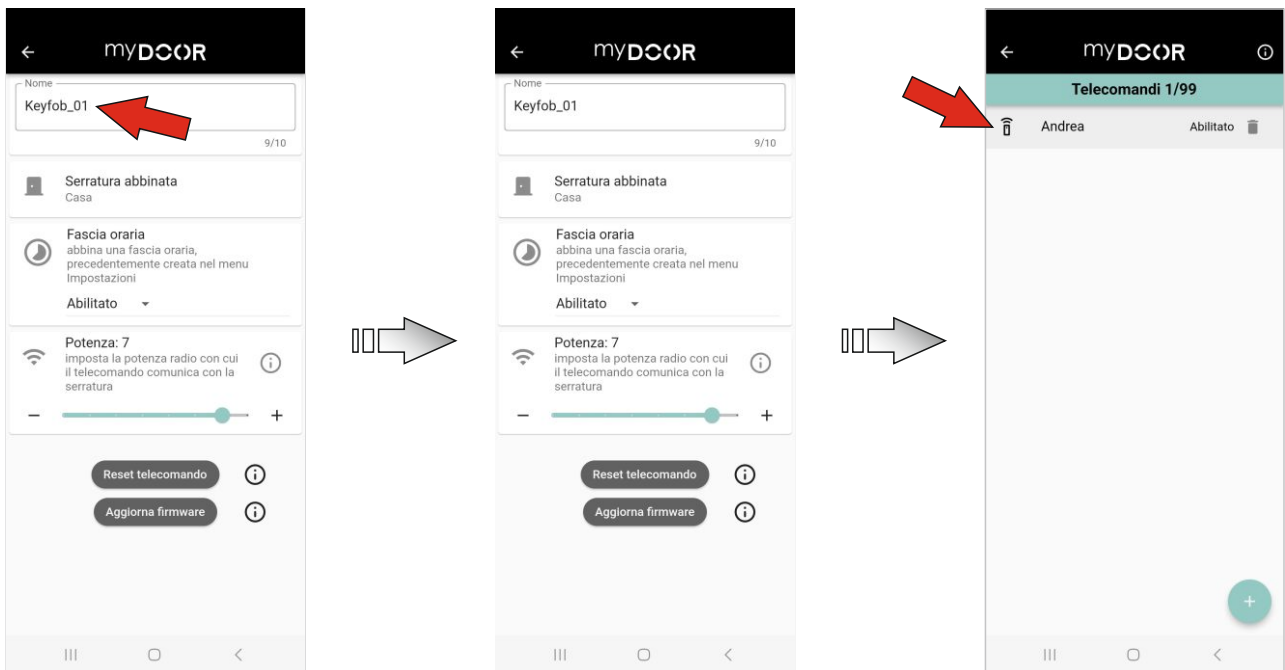


# Remote control management 3/8

## ➔ save settings

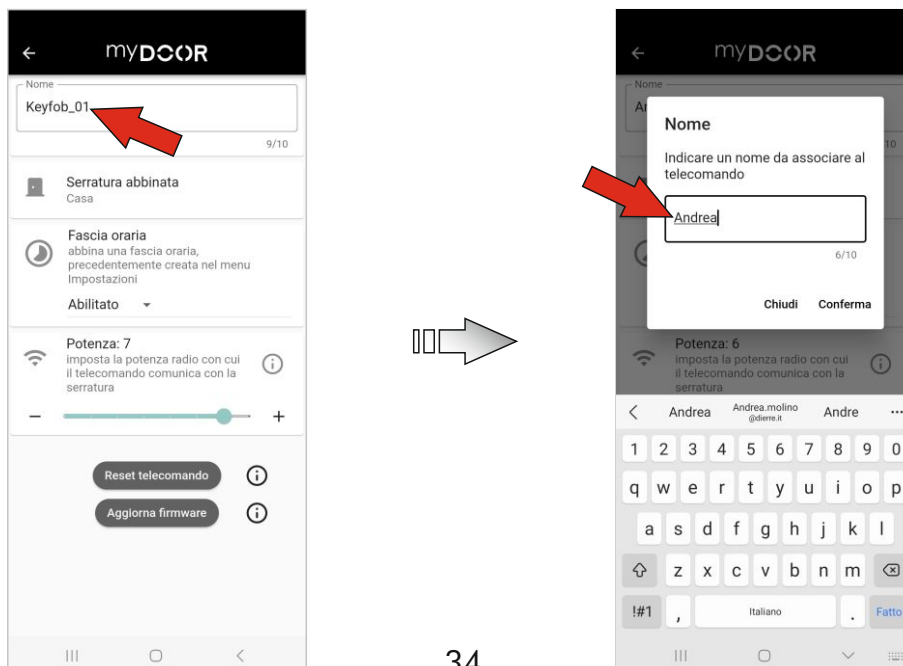
WARNING: after changing the PAIRING password, the key-fob must be disassociated from the native Bluetooth menu of the device being used and then carry out the association with the new password corresponding to that of the pairing of the lock.

➔ the Key-Fob LED will start flashing green again and it will therefore be possible to select it from the list in order to enter the settings



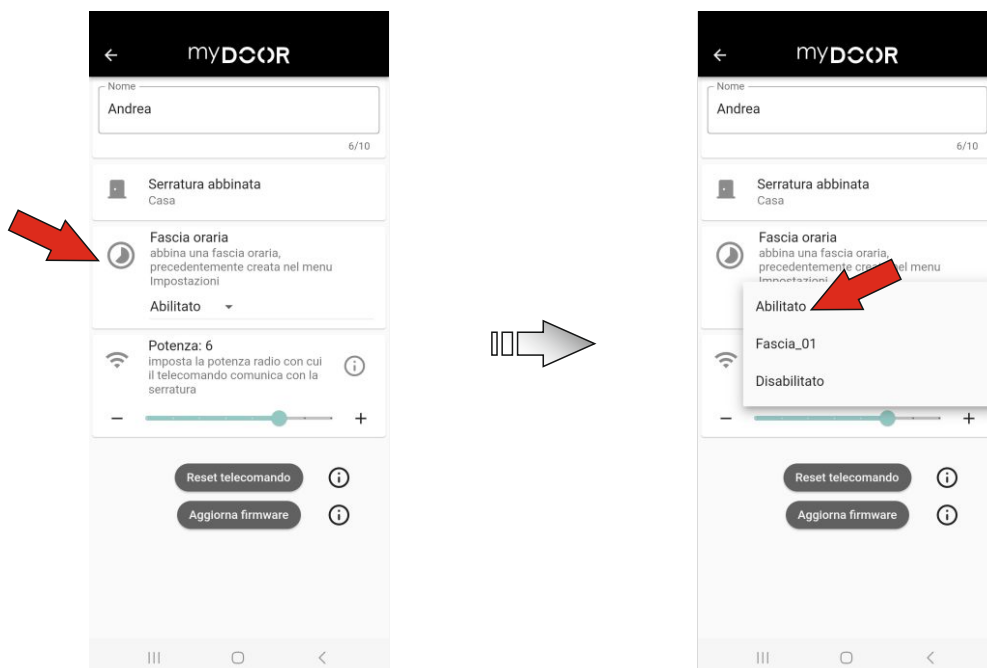
➔ from the Key-Fob menu it is possible to:

- change the name (maximum 10 characters)

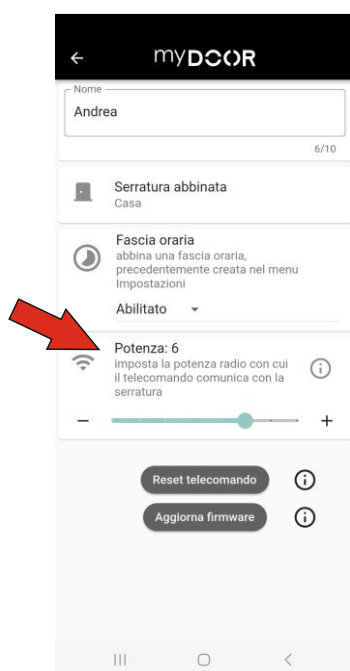


## Remote control management 4/8

- change the associated time frame or disable the Key-Fob

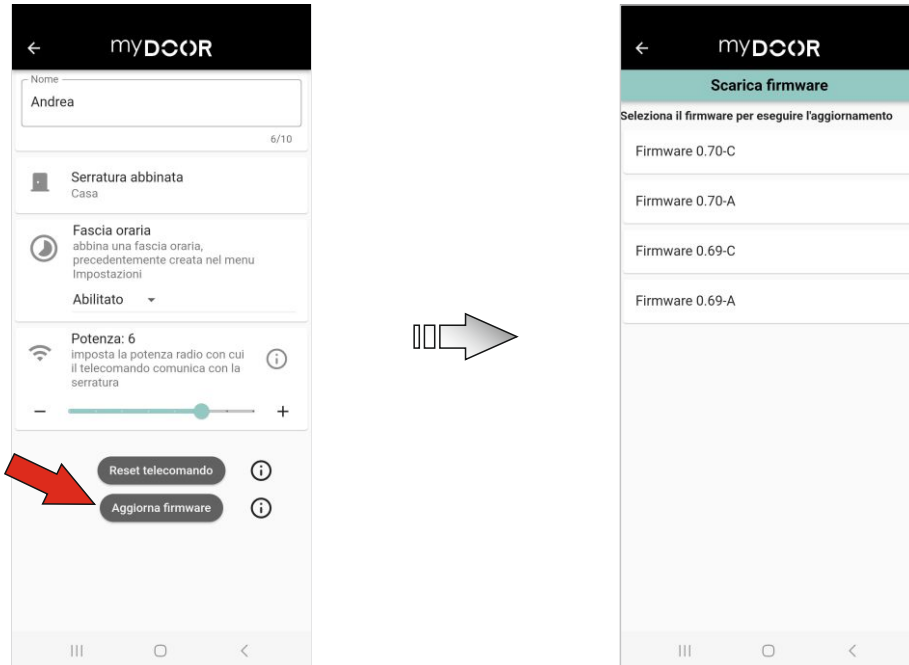


- set the power of the Key-Fob

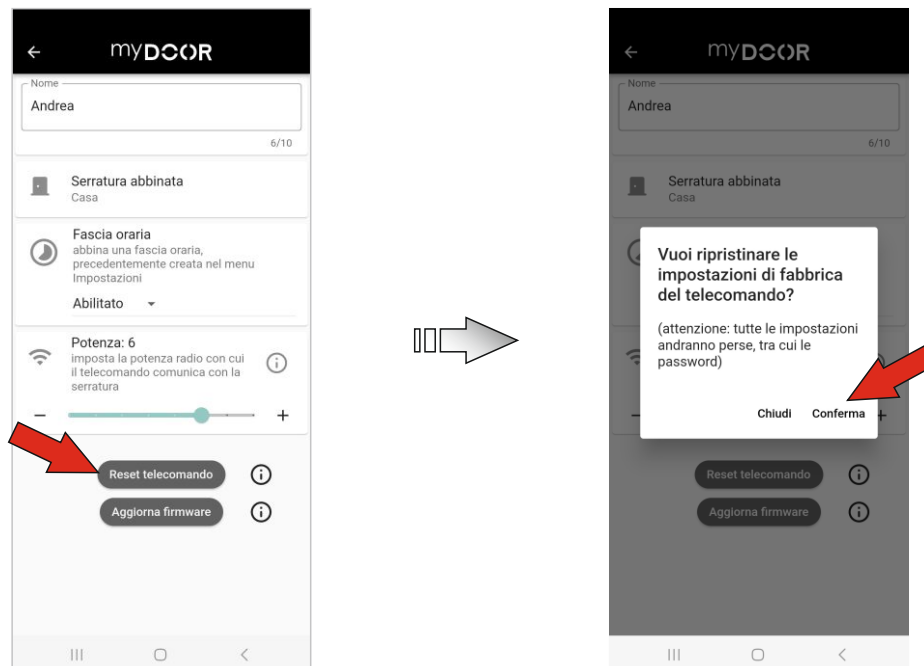


## Remote control management 5/8

-update the firmware

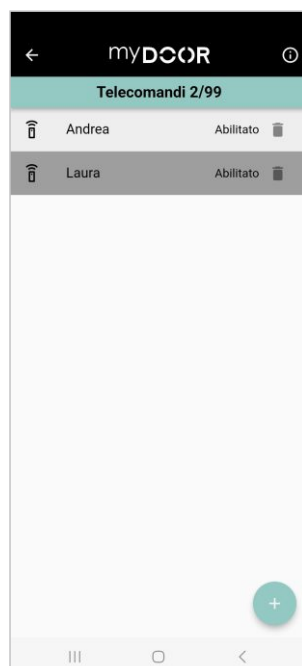


-reset the Key-Fob to the factory settings (pairing name and password, at the end of the reset the Key-Fob will also be deleted from the list).



## Remote control management 6/8

-always remember to save the settings in order to apply them to the Key-Fob

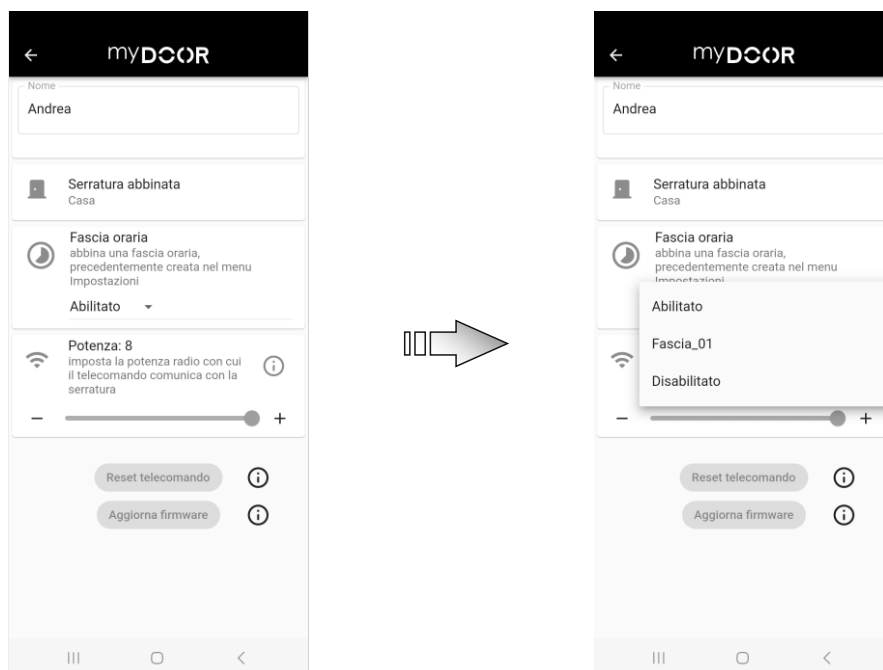


After the entry of the Key-Fob in the list, the report will be shown, specifically the number of Key-Fobs present with respect to the maximum possible number is indicated, the name list of Key-Fobs with the indication of the associated time band. In order to identify a Key-Fob in the list, simply press the Key-Fob button for at least 5 seconds, releasing it the LED will start to flash green, then simply press the "detect devices" button and the corresponding name will be identified in the list changing from semi-transparent to bold.

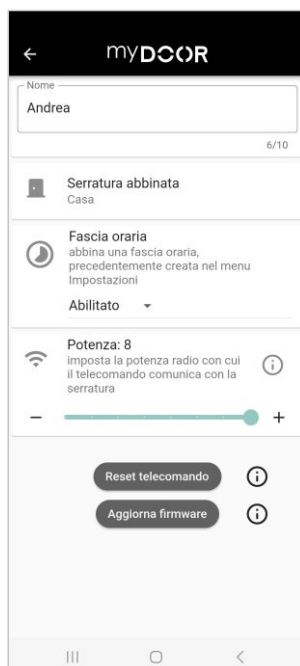
## Remote control management 7/8

For further details on a Key-Fob, simply press the one of interest in the list. This can be done in 2 ways:

- **without connecting the Key-Fob** (it is only possible to change the associated time band or disable the Key-Fob)



- **connecting the Key-Fob** (all the operations defined in the previous paragraph can be performed)



## Remote control management 8/8

A Key-Fob can be directly deleted from the list (by pressing the bin icon with Android or by dragging it to the left with iOS).

When a Key-Fob is deleted, while no setting is lost (pairing name and password), it is no longer authorized to open the lock.



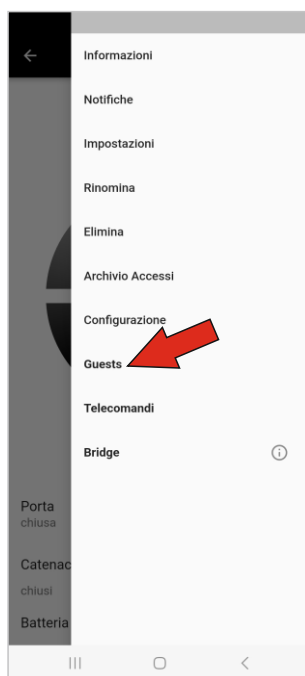
# Guest management 1/7

## Entry of new Guest profiles

The Guest is a type of profile that can only open and close the door with the rules attributed to it by the Master profile.

It is possible to create up to 99 Guest profiles, each profile is identified with its own name so that it can be easily recognized, it is also possible to associate a specific time band to it.

Simply access the menu by pressing the button with the 3 line at the top right of the App Home Page and select "GUESTS".



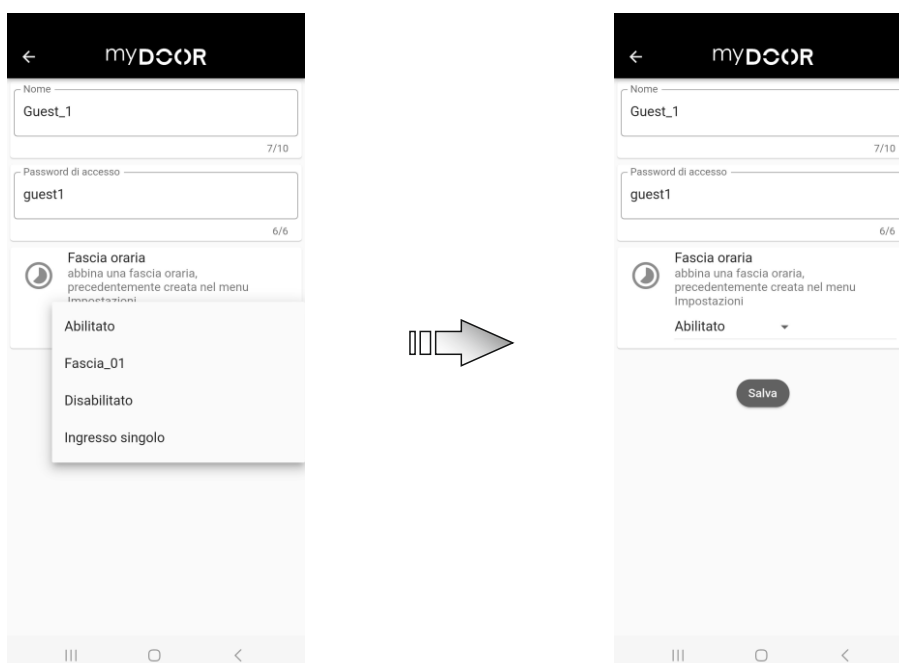
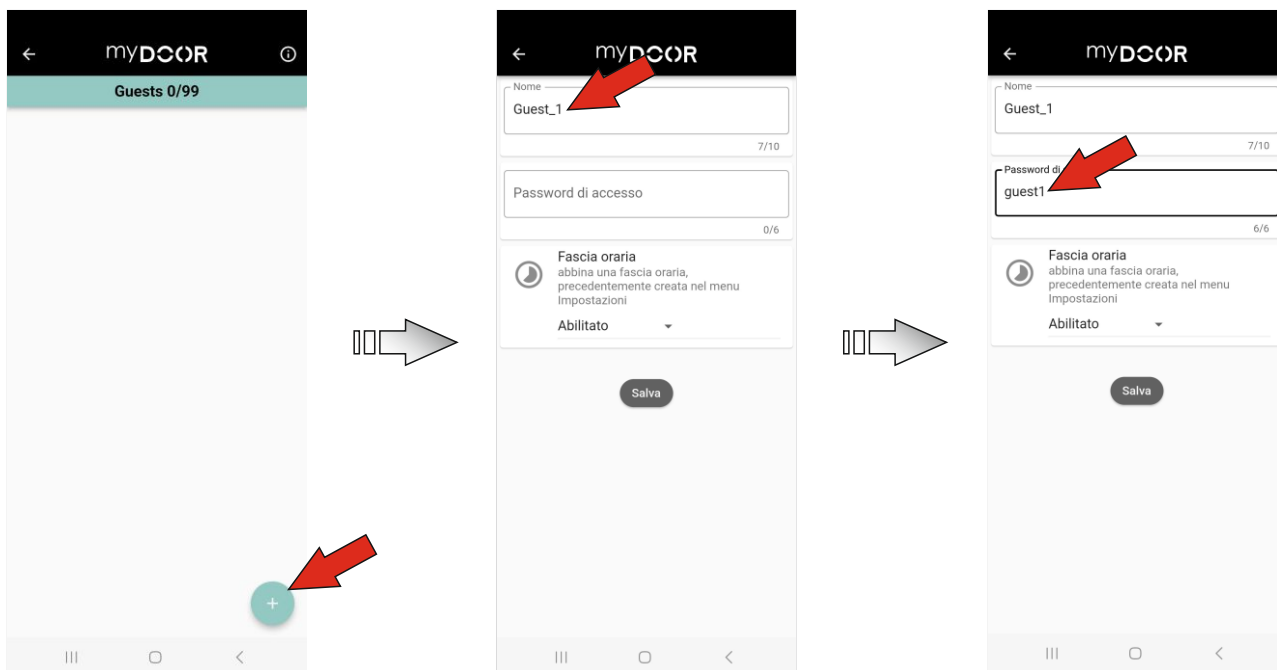
### ➤ Adding a Guest

To add a guest press the (+) button, change the name of the guest by pressing on the default name, then define the access password of the guest in question (6 alphanumeric characters), define the setting of the authorisation type\* and save the settings.

\*"Single entry" must be highlighted among the possible settings, which allows to associate to the specific profile the possibility of opening the door just once and then automatically disabled. Regardless of the set opening mode, when opening is performed with this profile, the lock behaves with an "Automatic" setting until it is

## Guest management 2/7

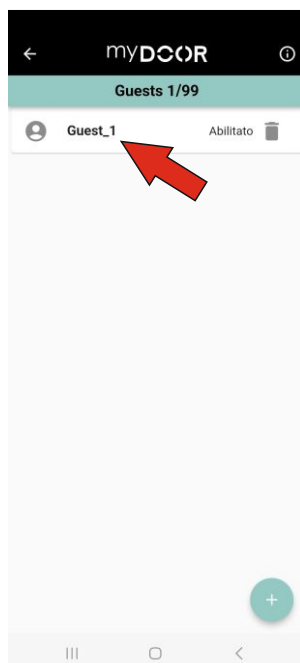
closed again, after which it returns to the mode in which it was previously set.



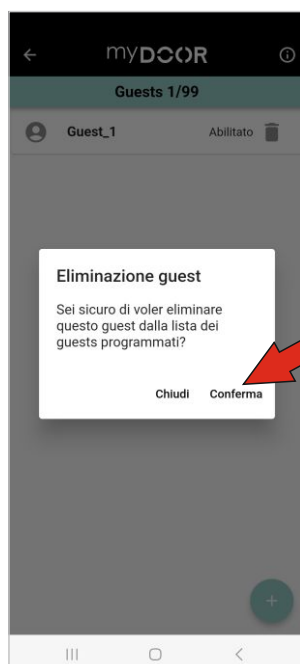
After setting, the report will be shown in the guests list, specifically the number of guests present compared to the maximum possible number, the name of the guest and the type of authorisation will be shown. For details on the guest it is necessary to press

## Guest management 3/7

on it to enter the specific settings.



A guest can be deleted directly from the list (pressing the bin icon with Android or by dragging it to the left with iOS).



## Guest management 4/7

### Pairing new devices

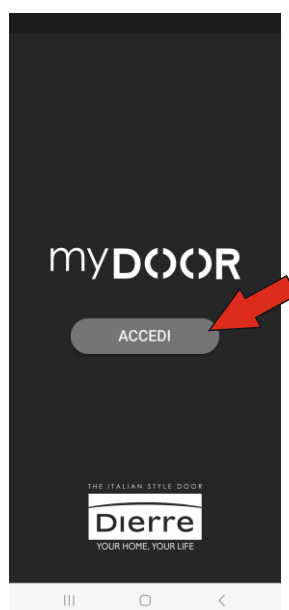
In order to be able to connect to the lock it is necessary to perform pairing using the PAIRING password.

Download the Dierre myDOOR App from the Play Store or Apple Store depending on the system used. See chapter "**How to download the myDOOR App**" at the beginning of the manual



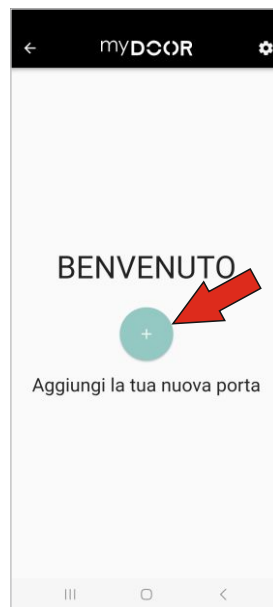
myDOOR Dierre

Then open the application and press "ACCESS".

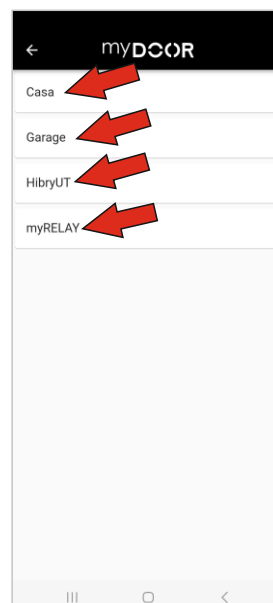


## Guest management 5/7

Start searching for the door to be paired by pressing the (+) button and wait for the scan time.

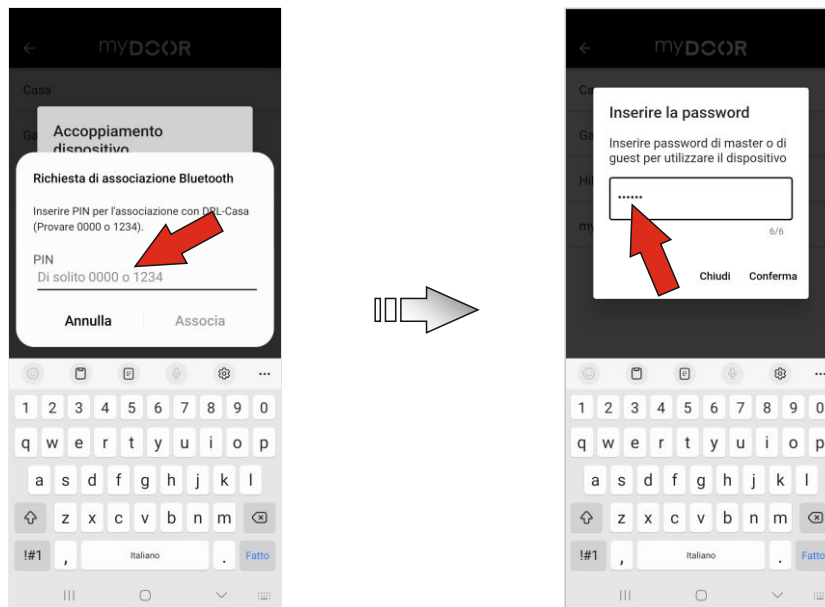


The search result is then shown, after which simply select the door you want to pair in order to connect to it.



## Guest management 6/7

The pairing password must be entered in order to establish a secure connection. On entering the correct password another one will be requested as a form of reference inside the door, this second password is used to establish if the device will have MASTER or GUEST credentials.



If you confirm yourself as a **GUEST** and at the time of connection the profile in question is enabled, access is gained to a Home Page with the following options:

➤ **Door status information:**

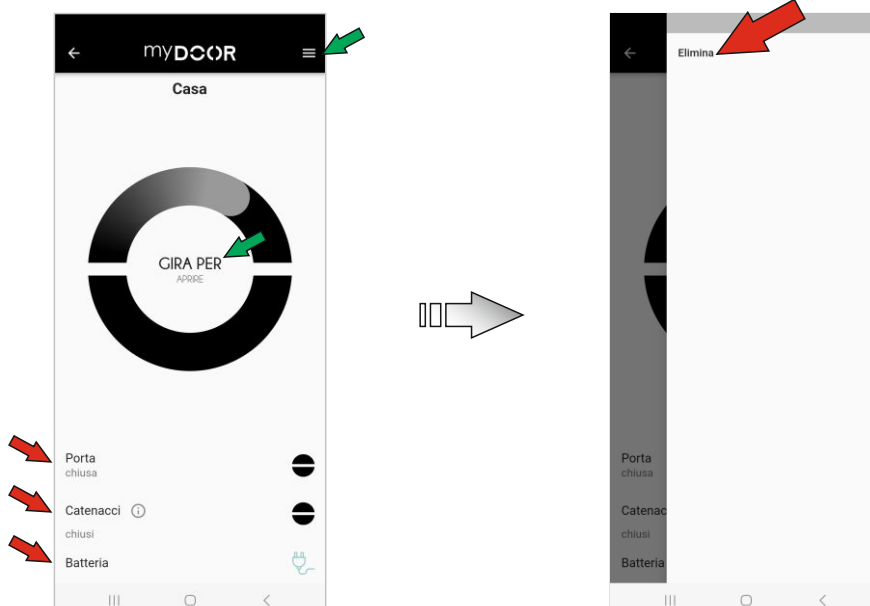
- Door open/closed
- bolts open/closed
- battery charge state

➤ **Dynamic button for door opening/closing management**

therefore you do not have access to any door configuration management.

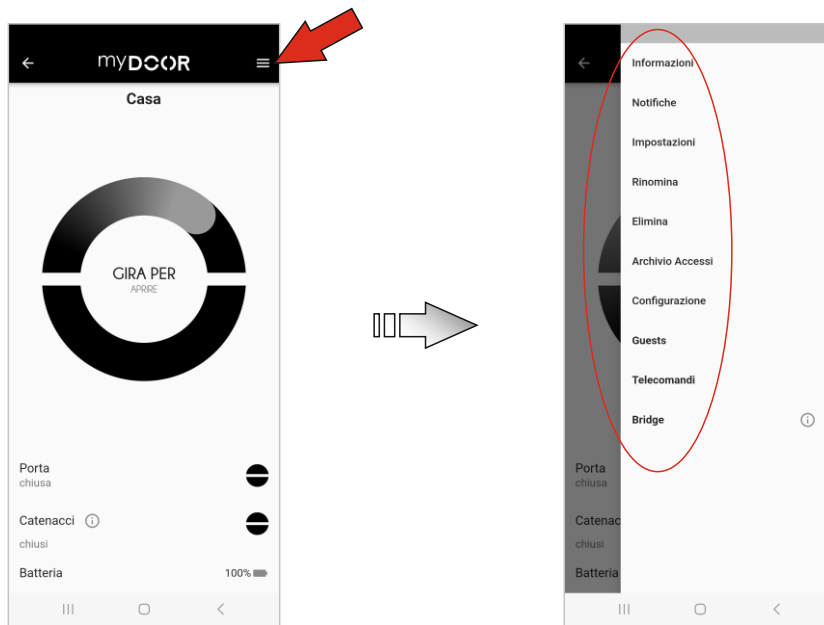
➤ **Access to the 3-line menu:**

It just allows to eliminate the lock from your list.



## Guest management 7/7

If you confirm yourself as **MASTER** there are no connection limitations and you will have access to a complete Home Page, in fact in addition to what is already indicated for the GUEST there is a button with 3 lines at the top right and pressing it you can gain access to all the door configuration menus. For more information, see the various specific chapters:



***N.B.: For more information see Configuration -First connection-***

The devices maintain pairing with the lock over time, so it is not necessary to enter passwords each time to access the menu.

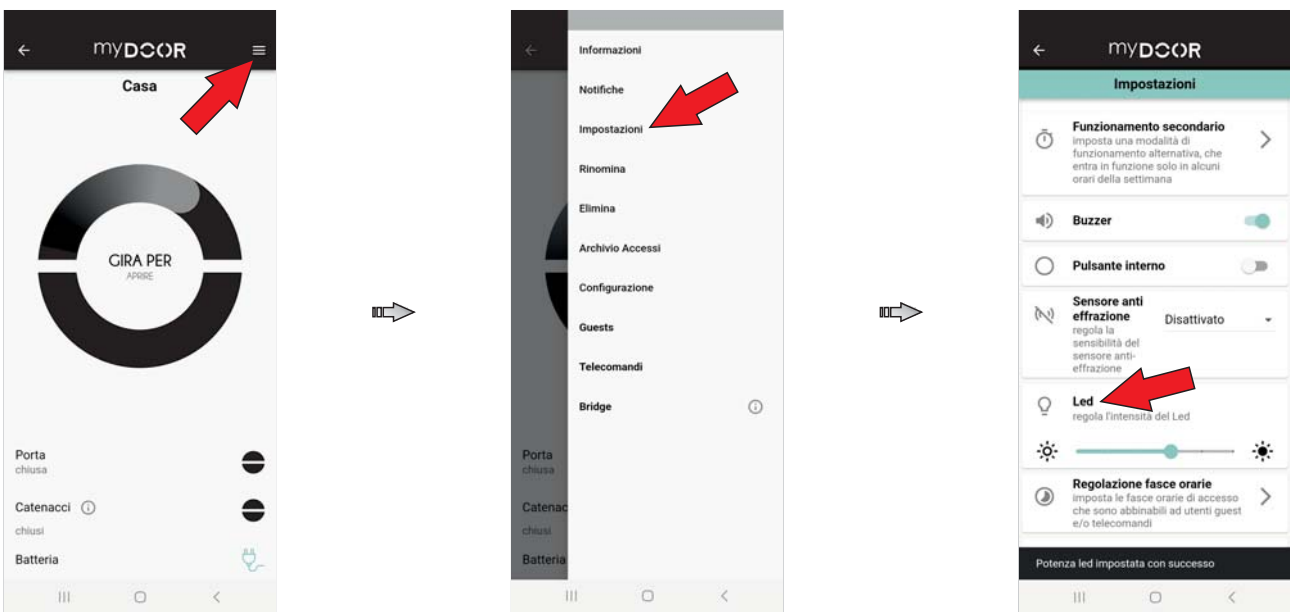
**WARNING:** the maximum limit of devices paired in the lock memory is 3, this means that when a fourth device is paired with the PAIRING password, the device that has been paired for the longest period is automatically deleted from the lock memory, consequently, when this device tries to connect to the lock again, pairing will have to be carried out again. The abovementioned applies only to PAIRING passwords since the passwords for access to the lock remain stored on the device, whether it is GUEST or MASTER.

# Secondary functions 1/5

## LED management

The LED indicator can be set to 5 different intensity levels and can also be switched off. Simply access the menu by pressing the button with the 3 lines at the top right of the App Home Page, select "Settings" and then press on the level in the "Led" line to access the drop-down menu to select the intensity.

PLEASE NOTE: the “external LED” line is not used to manage the Next Elettra lock, to adjust the LED use the command described above only.



The various meanings of LED colours and impulses are listed below:

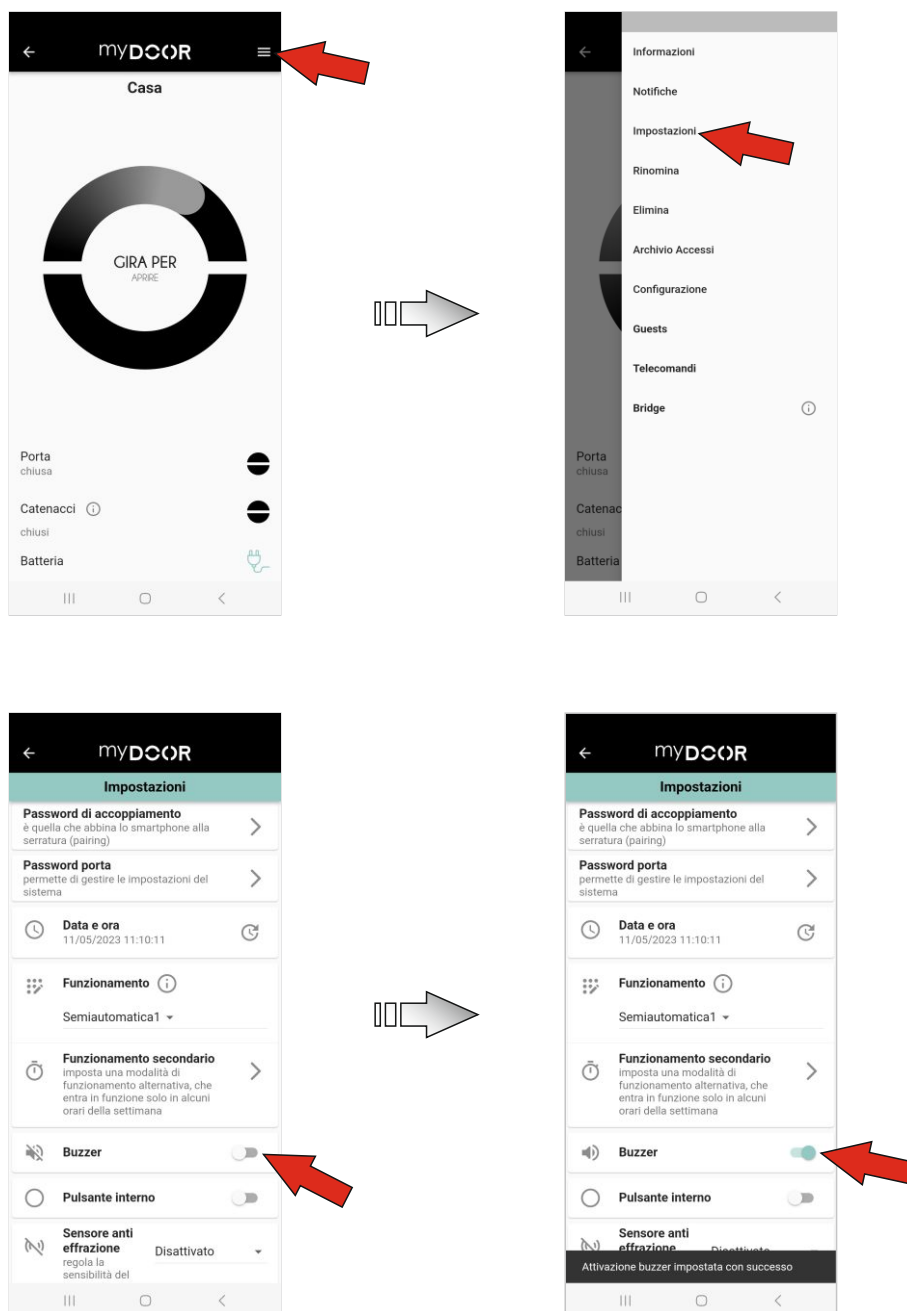
LED IMPULSE	MAINS POWERED DOOR	BATTERY POWERED DOOR
BLUE FIXED IMPULSE	Door in safety, the bolts are fully closed	Door in safety, the bolts are fully closed, the LED switches off 10 seconds after signalling.
BLUE INTERMITTENT IMPULSE	A device is connected to the door	A device is connected to the door. The pulse is not fluid as the energy-saving mode is active.
PURPLE FIXED IMPULSE	Door not in safety, the door is closed but the bolts are not completely closed	
GREEN INTERMITTENT IMPULSE	The motor of the lock is moving	
GREEN SINGLE or DOUBLE IMPULSE	The operation that was performed ended successfully (example: end of opening cycle)	
RED SINGLE or TRIPLE IMPULSE	The operation that was performed ended unsuccessfully (example: the opening cycle does not complete successfully)	
PURPLE INTERMITTENT PULSE	The latch of the lock is not completely released.	
SOLID WHITE COLOR	The MANUAL operating mode has been set.	

# Secondary functions 2/5

## Buzzer management

The buzzer can be enabled or disabled and is useful for obtaining information on the lock since it emits different sounds based on specific situations (e.g. cycle completed, impulse not recognized, etc.).

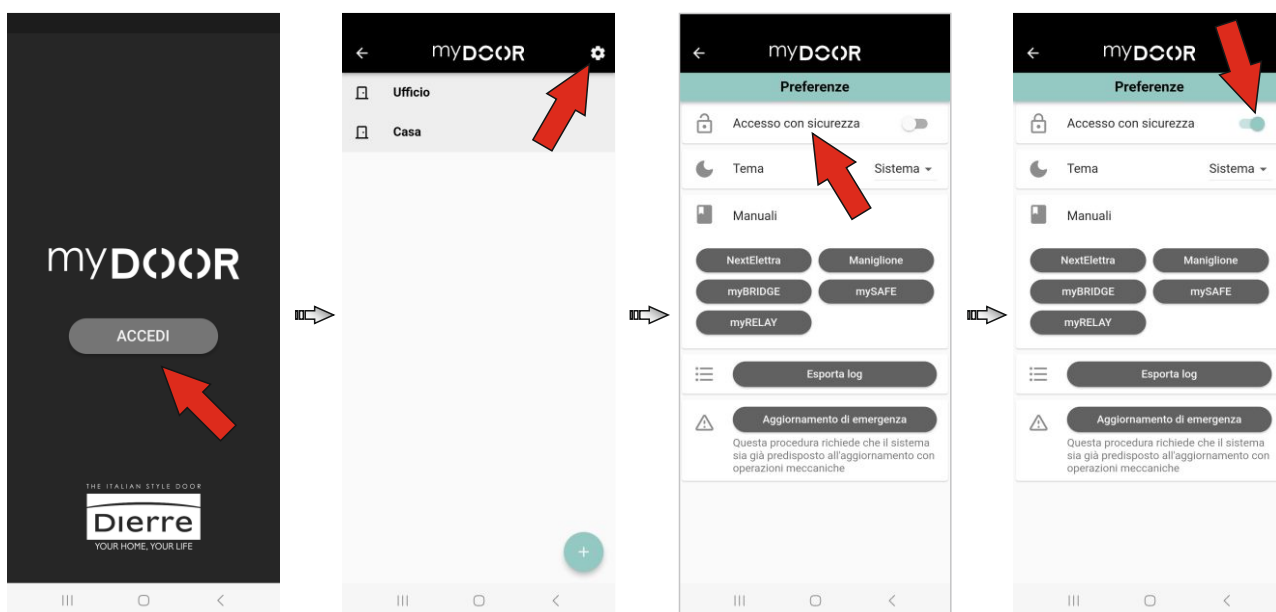
Simply access the menu by pressing the button with the 3 lines at the top right of the App Home Page, select "Settings" and then press the selector on the "Buzzer" line to enable or disable it (when enabled it emits a single beep, when disabled it emits a triple beep).



## Secondary functions 3/5

### Secure access

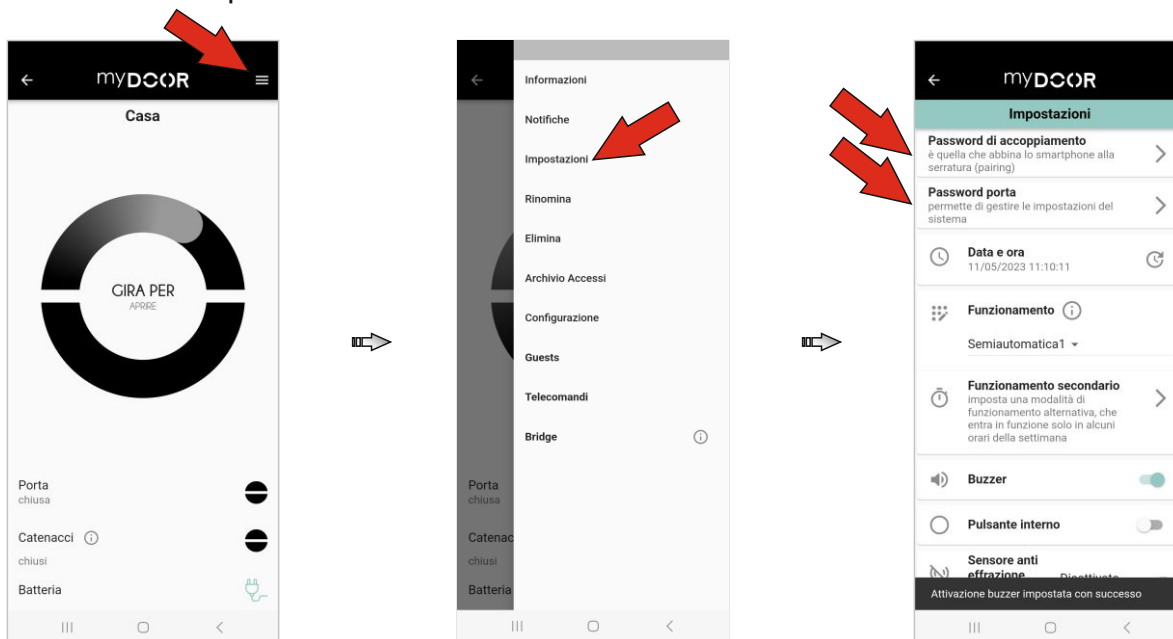
This function allows you to protect access to the myDOOR App using the unlocking mechanisms set for the phone (PIN, fingerprint, face ID, ...) From the main screen of the App, where the lock list is present, simply enter the main menu and access the "Secured access" option.



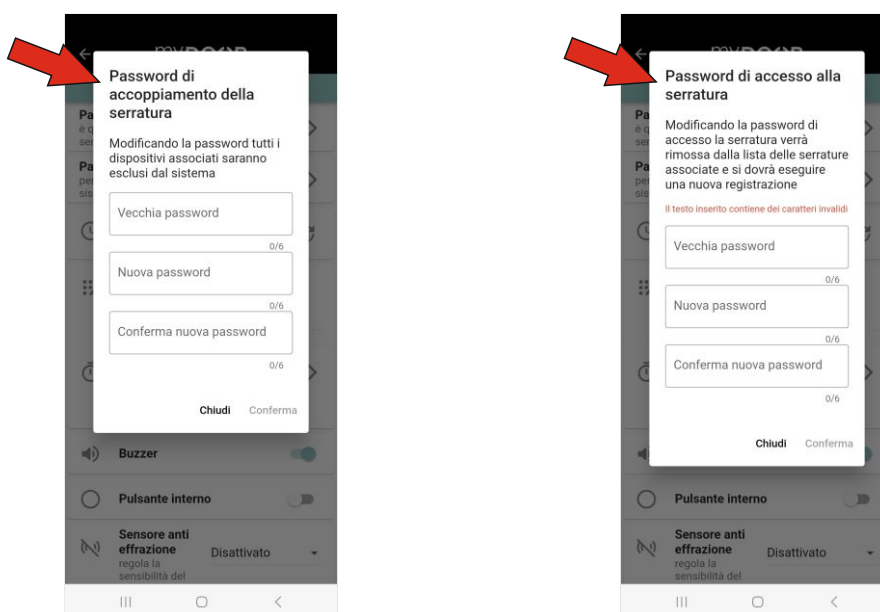
## Secondary functions 4/5

### Change password

It is possible to change the PAIRING password to the lock and the MASTER access password to the lock. Simply access the menu by pressing the button with the 3 lines at the top right of the App Home Page, select "Settings" and then press on the field below the "Pairing password" or "Door password" lines.



In both cases, a window will open that will allow you to change the specific password, you must enter the old password and then repeat the new password twice. Changing the "Pairing password" intervenes on the PAIRING password while modifying the "Door password" intervenes on the MASTER password.

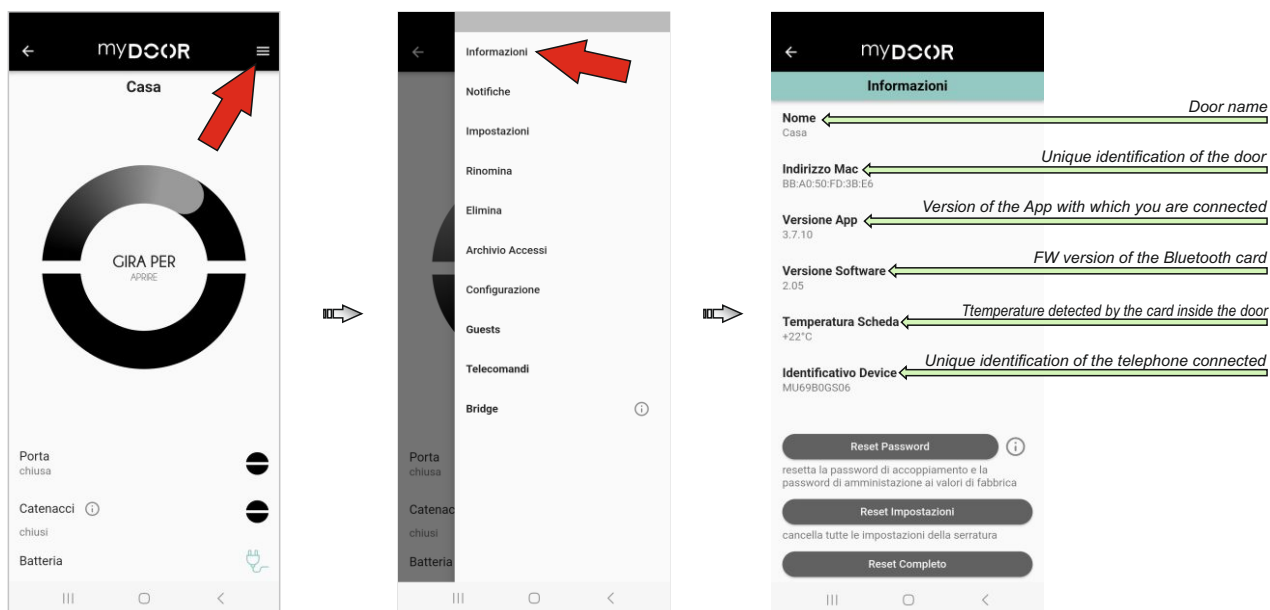


**WARNING:** by changing the "Pairing password" all devices must be updated with the new password in order to function (remote controls, GUEST, etc.). This operation is therefore recommended only if it is really necessary.

## Secondary functions 5/5

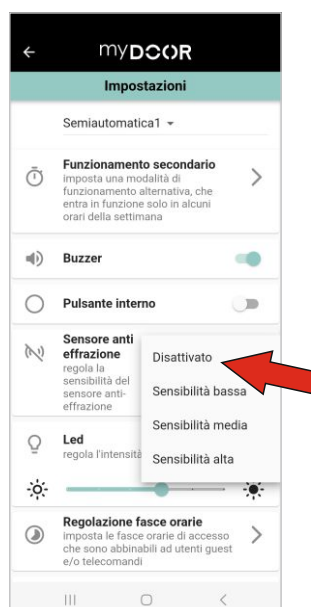
### Information

It is possible to access the system information, simply access the menu by pressing the button with the 3 lines at the top right of the App Home Page and select "Information".



### Sensor management

The "Sensors" function within the settings menu cannot yet be managed, FW updates will be released shortly.

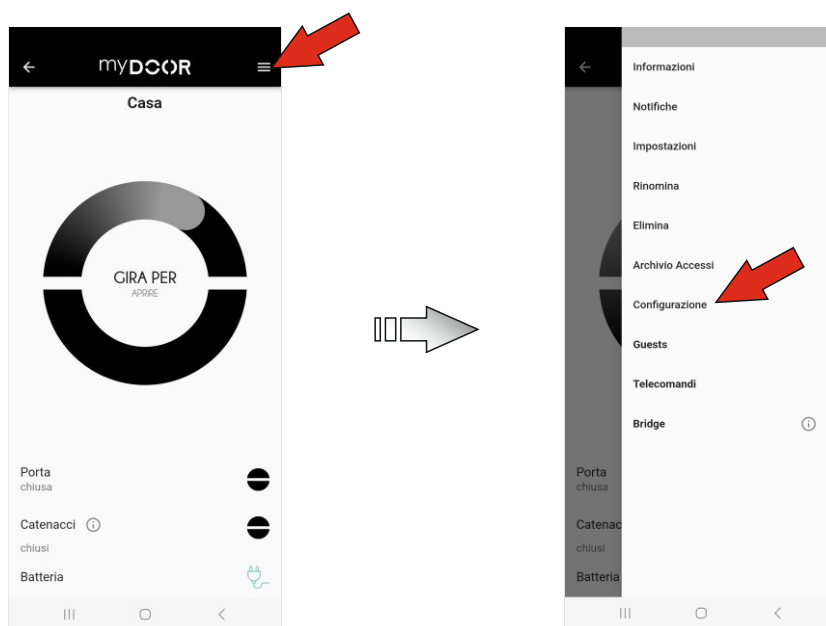


# Save/Upload Configuration 1/4

## Save Configuration

You can download the full configuration of a door and upload it to another door. The configuration includes all settings, ranges of time, remote controls, guests, passwords, etc., while it excludes access records, notification records, and the door name.

To save the configuration on your telephone, simply enter the menu by pressing the 3 lines button on the top right of the App Home Page and select the item “Configuration”.



Then, press the button “SAVE CONFIGURATION” and afterwards confirm by pressing “OK” in the appearing pop-up, wait for some seconds and, when the procedure is completed, a confirmation pop-up will appear. The configuration has been saved in the record and is ready to be uploaded to another lock.

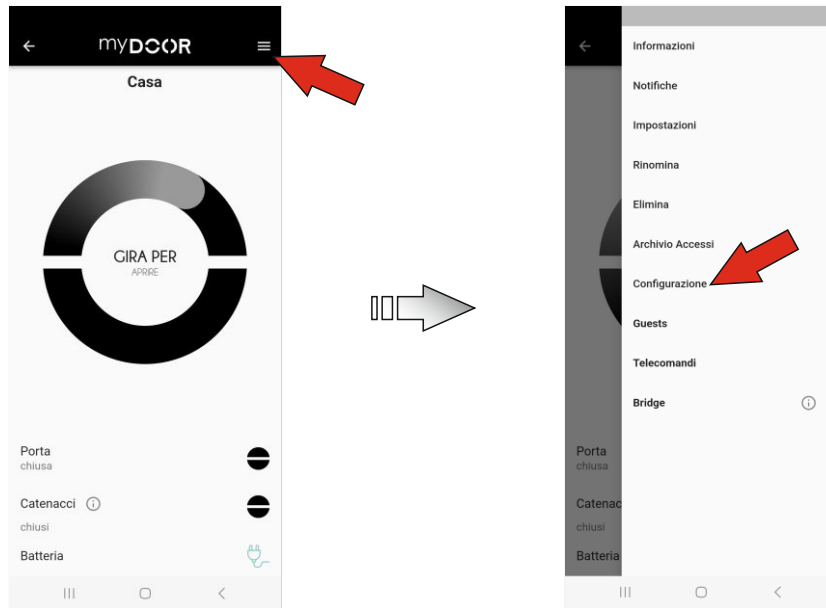


# Save/Upload Configuration 2/4

## Upload Configuration

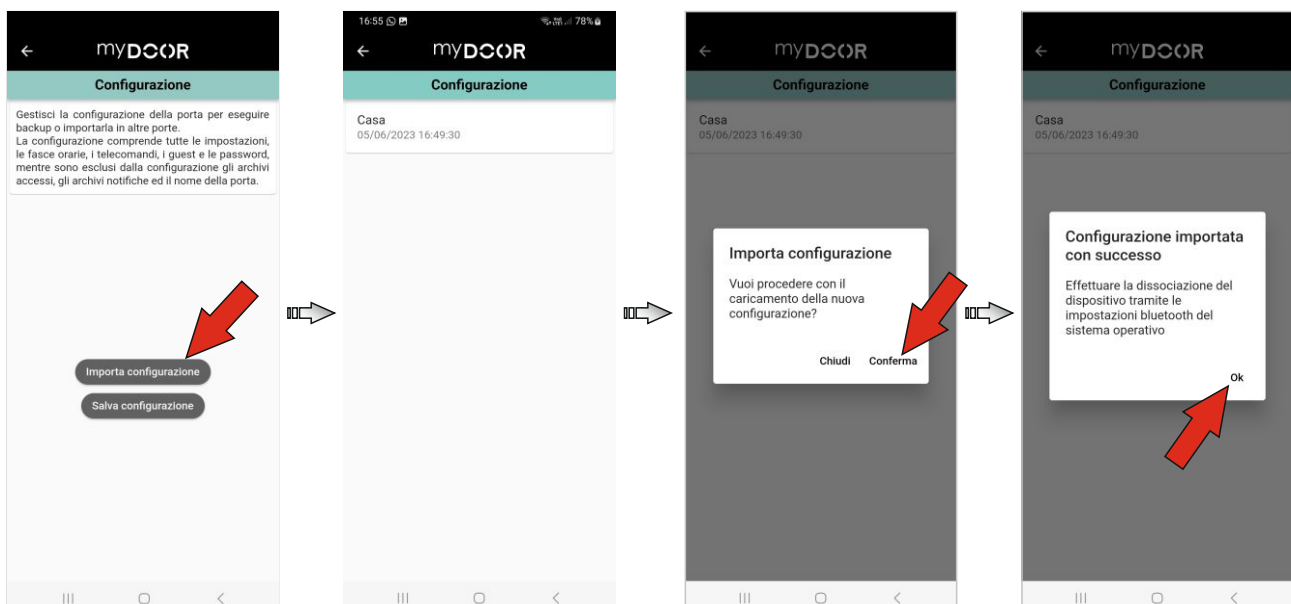
You can import the full configuration of a door previously saved on another door. Configuration includes all settings, ranges of time, remote controls, guests, passwords, etc., while it excludes access records, notification records, and the door name.

To import the configuration on another door simply enter the menu of the door where you want to upload the configuration by pressing the 3 lines button on the top right of the App Home Page and select the item “Configuration”.



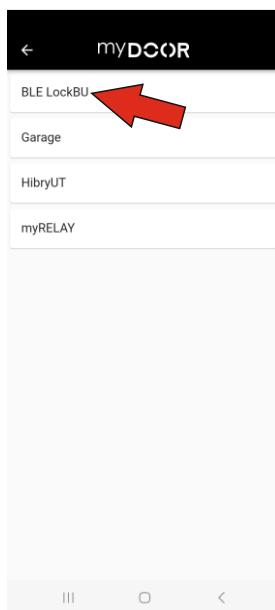
Then, press the button “IMPORT CONFIGURATION”, the list of saved configurations will appear. Simply press the one you want to upload, afterwards press “OK” in the pop-up that will appear. When the procedure is completed, a confirmation pop-up will appear and in this way the configuration has been uploaded correctly. By pressing “OK”, you come back to the page with the door list.

**WARNING: after having imported the configuration, you must unpair the lock from the native Bluetooth menu of the device you are using and afterwards pair it with the new password.**



## Save/Upload Configuration 3/4

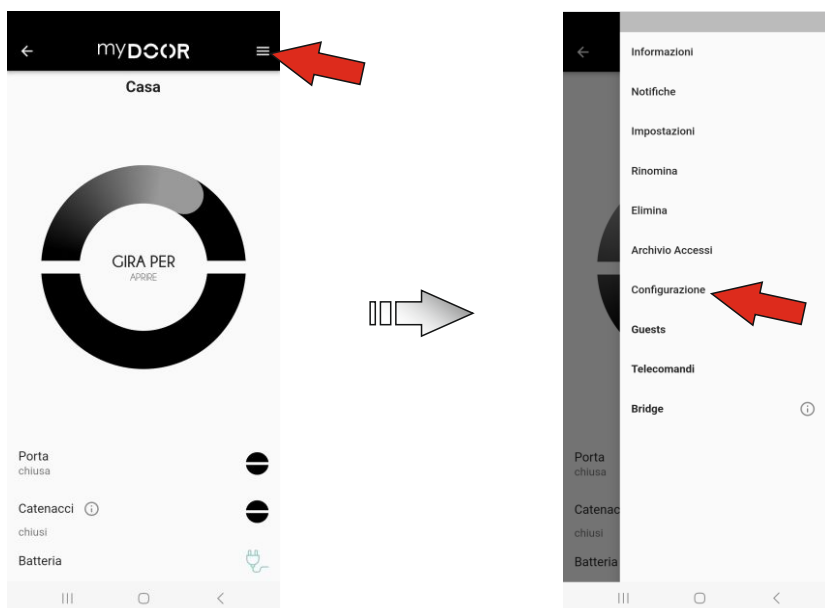
The door has been deleted from the list and so you must look for it to add it again. When a configuration has been imported on a lock, the latter is named BLE LockBU by default. Then, simply add it again to the list by entering the PAIRING and MASTER passwords from the initial configuration.



### Deletion of saved configurations

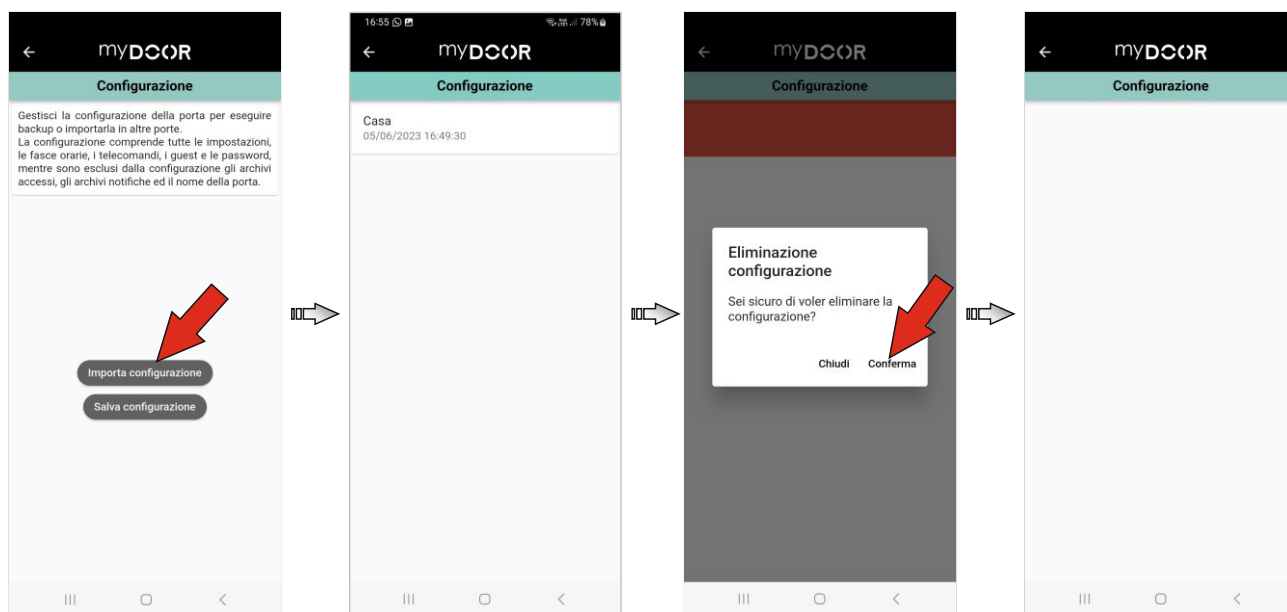
You can delete the configurations saved on your device.

Simply enter the door menu by pressing the 3 lines button on the top right of the App Home Page and select the item "Configuration".



## Save/Upload Configuration 4/4

Then, press the “IMPORT CONFIGURATION” button, the list of saved configurations will appear. To delete, simply hold pressed the button of the configuration you want to delete with Android or drag it towards the right with iOS.



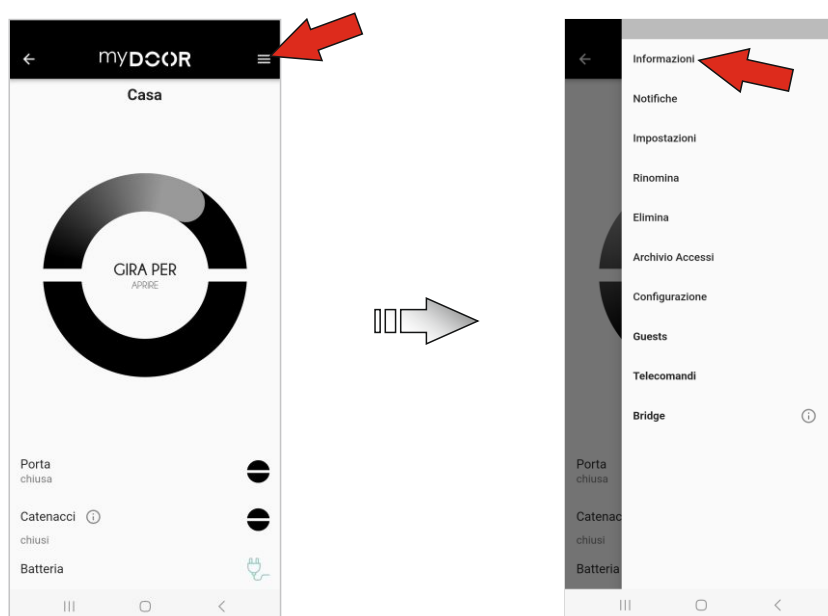


**ATTENTION: we recommend carrying out the update operations only with the support of a specialized Dierre technician.**

## Firmware update procedures 1/6

### Lock FW update

It is possible to update the FW of the lock, without removing any data from itself, by connecting to the lock with a MASTER profile, simply access the menu by pressing the button with 3 lines at the top right of the App Home Page and select the "Information" item



At the bottom of the screen, press "UPDATE FIRMWARE". Then, the various FW are downloaded from the server (make sure to have the device connected to the internet), select the appropriate FW (generally the most recent one and so with the latest version)

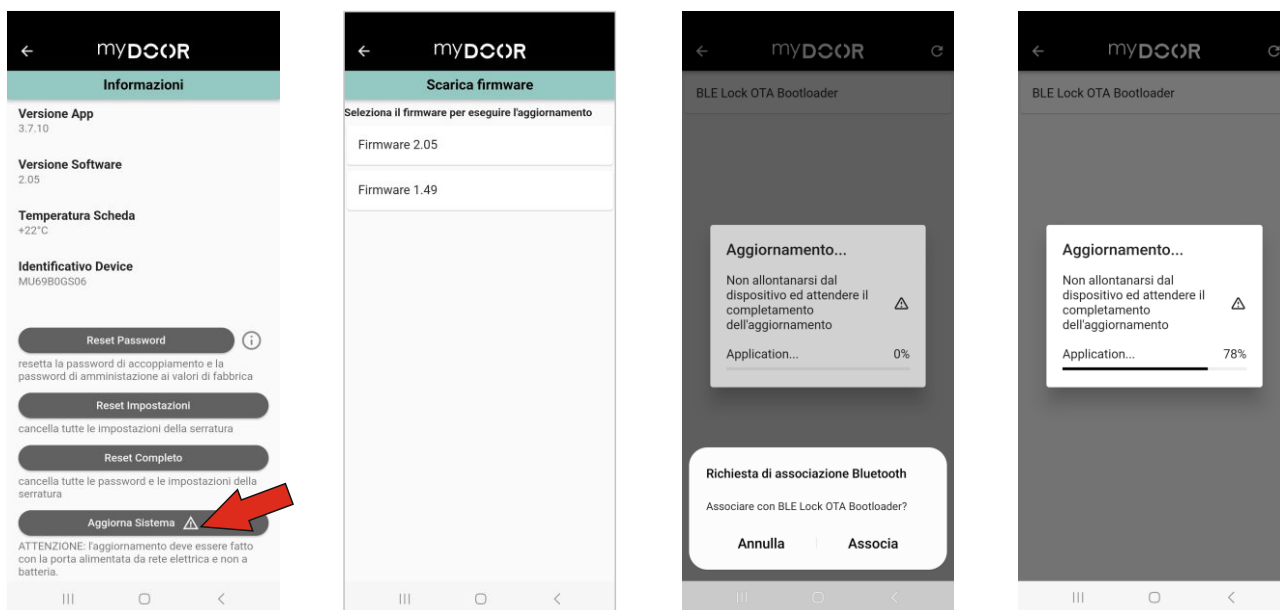


**ATTENTION: we recommend carrying out the update operations only with the support of a specialized Dierre technician.**



**ATTENTION:** we recommend carrying out the update operations only with the support of a specialized Dierre technician.

## Firmware update procedures 2/6



Then press the "UPDATE" button at the bottom of the screen. An information pop-up is opened if the selected FWs are earlier or the same as the one already present on the lock.

Once the lock has been selected, the system requires a confirmation for Bluetooth pairing and the update starts.

**WARNING:** this operation must be performed twice, the first one to upload the APPLICATION and the second one to upload the STACK.

**PLEASE NOTE:** the lock automatically exits the BOOTLOADER mode, and as long as it remains in this mode it is not possible to interact with it except to update it.

The LED remains off during the update and the lock emits LED and acoustic impulses at the end of the operation to confirm the update.



**ATTENTION:** we recommend carrying out the update operations only with the support of a specialized Dierre technician.



***ATTENTION: we recommend carrying out the update operations only with the support of a specialized Dierre technician.***

## **Firmware update procedures 3/6**

Subsequently, in order to connect to the lock, PAIRING must be carried out again (refer to the relevant "First connection" chapter) using the password set by the MASTER.

WARNING: the lock must be dissociated from the native Bluetooth menu of the device you are using and only then can pairing be performed.



***ATTENTION: we recommend carrying out the update operations only with the support of a specialized Dierre technician.***

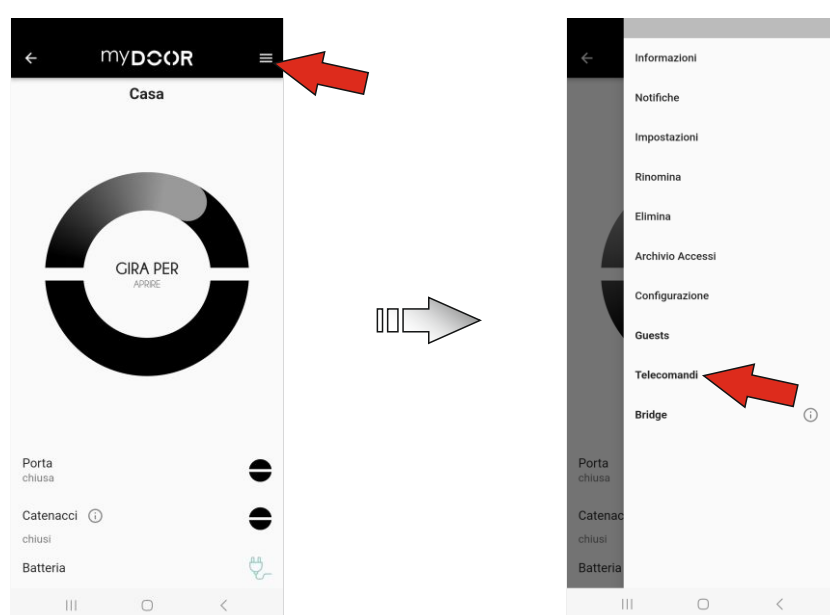


**ATTENTION:** we recommend carrying out the update operations only with the support of a specialized *Dierre* technician.

## Firmware update procedures 4/6

### Remote controls FW update

You can update the FW of the remote controls while maintaining the association with the lock. Remote controls FW update The update is only allowed if the remote control is associated with a lock. By connecting to the lock with a MASTER profile, simply access the menu by pressing on the button with 3 lines at the top right of the Home Page of the App and select the item "REMOTE CONTROLS"



Take the remote control you want to update and press the button for at least 5 seconds, when the button is released the remote control LED starts to flash green. The name corresponding to the remote control in question will be identified by changing from semi-transparent to bold.



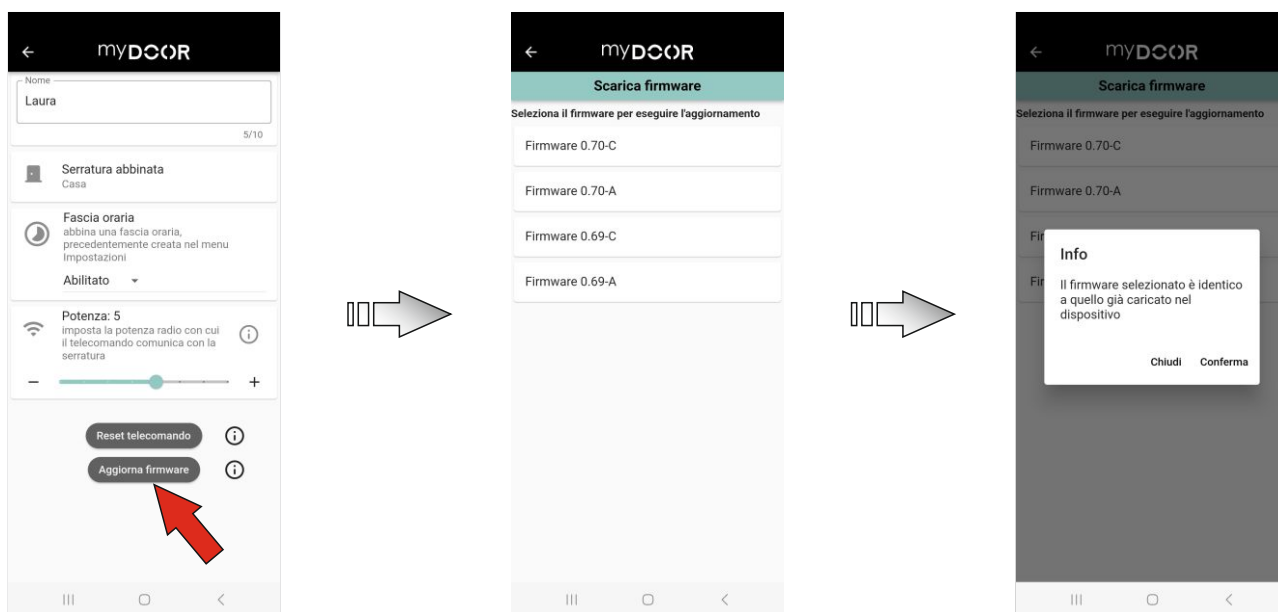
**ATTENTION:** we recommend carrying out the update operations only with the support of a specialized *Dierre* technician.



**ATTENTION:** we recommend carrying out the update operations only with the support of a specialized Dierre technician.

## Firmware update procedures 5/6

Then, you must select the relevant remote control to connect to it. At this point, simply press the button “UPDATE FIRMWARE”. Then, the various FW are downloaded from the server (make sure to have the device connected to the internet), select the appropriate FW (generally the most recent one and so with the latest version) by simply clicking on the empty bullet.



An information pop-up opens if the selected FWs are earlier or the same as the one already present on the lock.

At this point the device starts searching for the remote control that enters BOOTLOADER mode for a few minutes, in this time it will be possible to carry out the update by selecting the remote control itself from the list that is shown, in this mode all the remote controls are called "Keyfob OTA Bootloader ". Once the remote control is selected, confirmation for Bluetooth pairing is requested and the update begins.

**WARNING:** this operation must be performed twice, the first one to upload the APPLICATION and the second one to upload the STACK.

**PLEASE NOTE:** the remote control exits automatically from BOOTLOADER mode and as long as it remains in this mode it is not possible to interact with it except to update it.

During the update, the RED LED remains on fixed and at the end of the operation, in order to be able to connect to the remote control again, it is necessary to perform the pairing again using the pairing password of the lock.



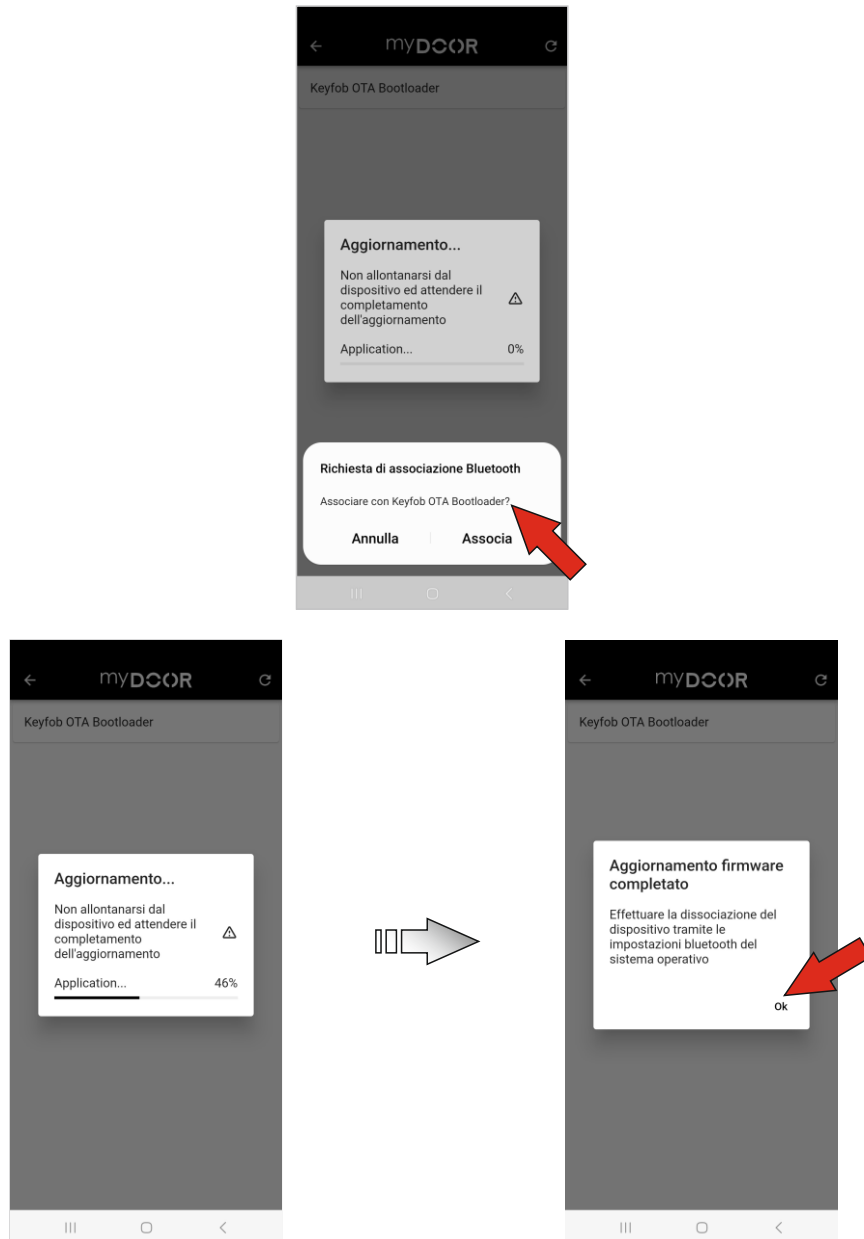
**ATTENTION:** we recommend carrying out the update operations only with the support of a specialized Dierre technician.



**ATTENTION:** we recommend carrying out the update operations only with the support of a specialized Dierre technician.

## Firmware update procedures 6/6

WARNING: the remote control must be disassociated from the native Bluetooth menu of the device you are using and only then can pairing be performed.



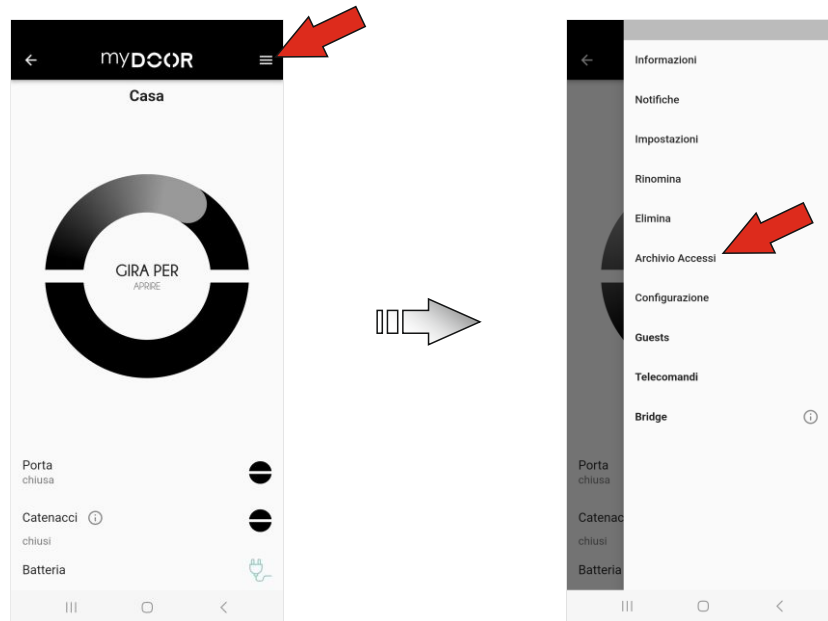
**ATTENTION:** we recommend carrying out the update operations only with the support of a specialized Dierre technician.

# Access and notification control 1/5

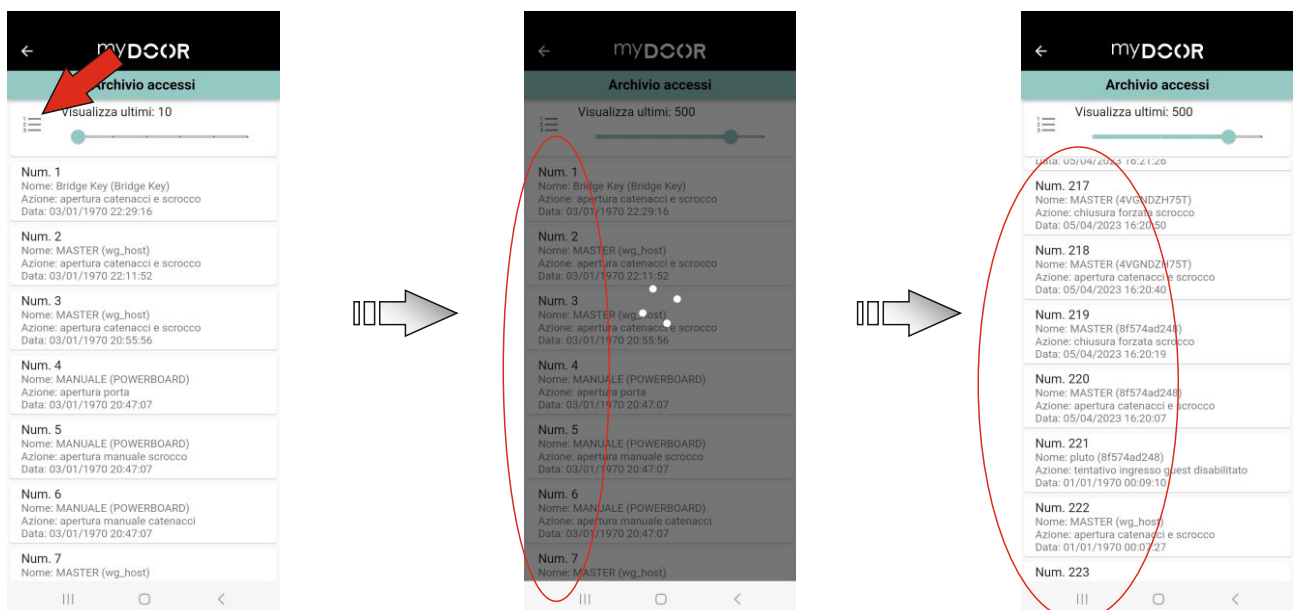
## Access Archive

This menu allows to precisely and accurately check when the door was opened/closed, how it was carried out and who carried it out.

Simply access the menu by pressing the button with the 3 lines at the top right of the App Home Page and select "Access Archive"



In order to view the access log, it is necessary to download them from the lock, select the dropdown menu and choose the amount of records that you want to have the history of, up to a maximum of 999. The data will then be downloaded and shown.



## Access and notification control 2/5

### Notifications and alarms

This menu allows to have a complete list of notifications signalled by the lock (up to a maximum of 100 events). The possible notifications are as follows:

#### ⇒ **Mains power supply KO**

Identifies that the voltage present on the frame card is below 10V and is not sufficient to ensure the correct operation of the lock.

#### ⇒ **Low battery**

Identifies that the battery is flat or faulty. In this situation the lock cannot be operated by the motor, leave it for at least 24h on charge to evaluate the situation.

#### ⇒ **Latch sensors reading fault**

Identifies that there has been a problem with checking the status of the latch position. The causes can be different, and tests must be carried out to evaluate what the problem of this notification could be.

#### ⇒ **Mechanical block of bolts during opening**

Identifies that during the opening cycle the lock detected an obstacle that did not allow the cycle to end. If the problem persists, contact a technician to check the product.

#### ⇒ **Mechanical block of the bolts during closing**

Identifies that during the opening cycle the lock detected an obstacle that did not allow the cycle to end. If the problem persists, contact a technician to check the product.

#### ⇒ **Attempt to engage gears**

Identifies that there have been no-load movements of the motor that have led to automatic attempts to reset. If the problem persists, contact a technician to check the product.

#### ⇒ **Motor no-load time-out**

Identify that a succession of 3 attempts to engage gears could not couple the motor to the lock mechanics and this leads to a malfunction of the assembly. The problem could be caused by incorrect positioning of the cylinder knob, so try to rotate it a few degrees towards the lock side until it feels free. If the problem persists, contact a technician to check the product.

## Access and notification control 3/5

### ⇒ **Unable to perform the test**

Identifies that there were problems during the last test started. If the problem persists, contact a technician to check the product.

### ⇒ **Motor fault**

Identifies that the motor is having problems, it may randomly run for a few cycles and then stop again. A technician should be contacted to replace the lock.

### ⇒ **Bolt sensors reading fault**

Identifies that there has been a problem with checking the status of the bolts position. The causes can be different, and tests must be carried out to evaluate what the problem of this notification could be.

### ⇒ **Throttle sensor reading fault**

Identifies that there has been a problem with checking the status of the position of the rotation system of the lock's mechanical parts. The causes can be different, tests must be carried out to evaluate what the problem of this notification could be.

### ⇒ **Break-in attempt**

Identifies that a break-in attempted has been detected.

### ⇒ **Start acceptance test**

Identifies that an acceptance test has been started

### ⇒ **Start of diagnostic test**

Identifies that a diagnostic test has been started

### ⇒ **Start of sensor control test**

Identifies that a sensor control test has been started

### ⇒ **Key-Fob access Attempt**

It detects that a disabled or out-of-time frame Key-Fob has attempted to connect to the door to unlock it

## Access and notification control 4/5

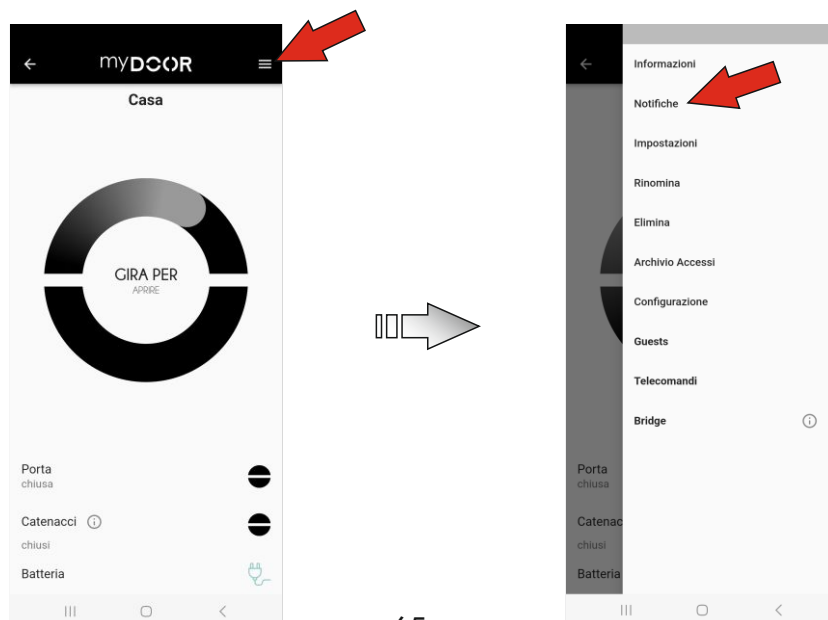
### ➔ Guest Access Attempt

It detects that a disabled or out-of-time frame Guest has attempted to connect to the door to unlock it.

If there are new notifications not yet displayed, a red alert will be shown at the top right, simply press this symbol to access the list of notifications.

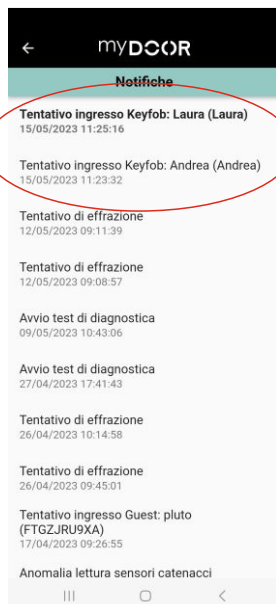


If, on the other hand, there are no new notifications, to access the list simply access the menu by pressing the button with the 3 lines at the top right of the App Home Page and select "Notifications"



## Access and notification control 5/5

All the events that occurred on the lock and the relative time details will then be downloaded and displayed.



## Others 1/4

### Battery replacement and remote controls reset

In order to replace the battery or reset the remote controls, the cover must be removed to have access to the back side of the card.

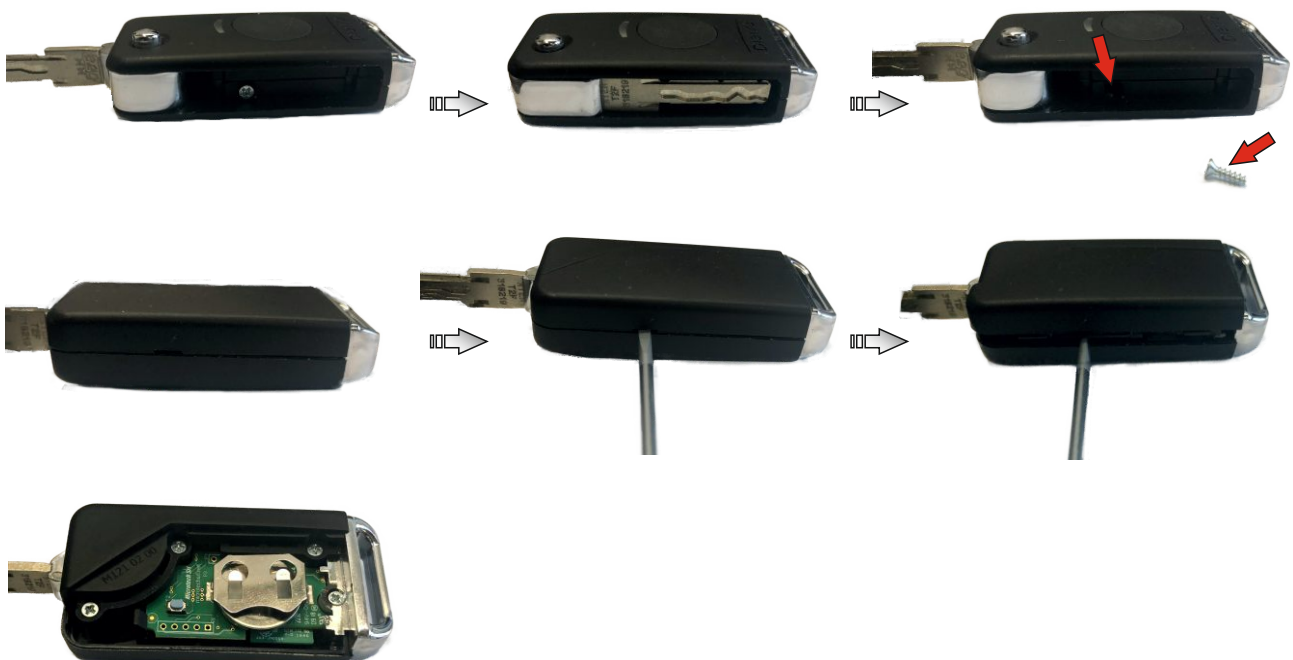
#### • For **Key-Fob**

Locate the notch on the side of the remote control, insert a flat head screwdriver in the notch and rotating it 90° proceed manually to separate the 2 shells to access the back of the board.



#### • For **Easy Key-Fob**

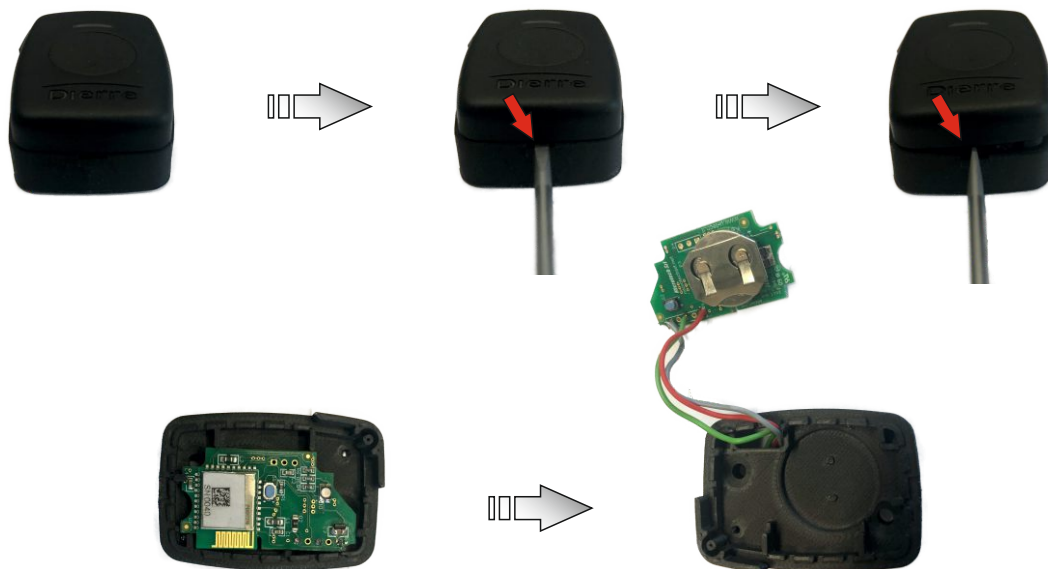
Open the flip key and remove the cover retaining screw with a Phillips screwdriver. Locate the notch on the side of the remote control, insert a flathead screwdriver in the notch and rotating it 90° proceed manually to lift the cover to access the back of the board.



## Others 2/4

- For **Remote Key-Fob**

Locate the notch on the side of the remote control, insert a flat head screwdriver into the notch and rotating it 90° proceed manually to separate the 2 shells to access the board. Then lift it from the base of the remote control being careful not to damage the cables, at this point there is excess to the back of the board.



Once you have accessed the back of the board, you can proceed with replacing the CR2032 battery or resetting the remote control. The latter operation returns the card to the factory conditions, the default name DRK-Keyfob is set and the pairing password returns to 987654. In order to perform the reset, it is necessary to hold down both buttons on the board for 10 seconds, when released, the blue LED will flash 3 times to confirm the reset.

### **Door cancellation**

The door can be cancelled from the list in 2 different ways:

- Method 1 : for iOS, drag the desired name in the list of doors to the left, while for Android, press and hold on the name in the list of doors you want to delete
- Method 2 : from the menu, select "Delete" and proceed

In both cases, the door does not lose any data and the pairing between smartphone and door remains active, however, if you want to connect again you must re-enter the pairing password (Master or Guest).

## Others 3/4

### Restarting of lock electronics

This function is available on locks with power boards from version 2.1.0 onwards. The version of the power board can be found in the file 'Info and settings.csv', which can be downloaded from the App in the Information section, under 'FW power board' (See chapter Advanced functions).

The following procedure allows the Bluetooth electronics board to be restarted without accessing the DIP switches:

1. Open the door (door leaf off)
2. Pull out the deadbolts mechanically, with the key or knob
3. Fully retract the latch in the lock for at least 5 seconds
4. Release the latch
5. The BLE board is restarted
6. System restart can also be performed using the dedicated button in the "Information" menu of the myDOOR app.

### Door Full Reset

You can reset the port by returning it to factory settings both as data and as password, the procedure is as follows: from the menu, choose "Information" and then proceed with the button "FULL RESET". The door loses all data and passwords returning to factory settings. It should be emphasized that after a reset it is also necessary to re-associate all the various remote controls by resetting them too if you do not remember the pairing password.

### Specific Door Reset

The door can be reset to factory settings by excluding the deletion of the password, the procedure is as follows: from the menu choose "Information" and then proceed with the "RESET SETTINGS" button

It is possible to reset the MASTER and PAIRING passwords only, the procedure is as follows: from the menu, choose "Information" and then proceed with the button "RESET PASSWORD"






It must be highlighted that after such a reset you must pair again all the various remote controls by resetting them in the case that you do not remember the pairing password

## Others 4/4

### Investigation of problems with remote controls in the Key-Fob family

The table below shows the colour sequence of the remote control LED when pressing to open the door.

N.B.: if the light fades, it means that the battery is running low.

LED COLOUR SEQUENCE	DESCRIPTION	MEANING AND REQUIRED ACTION
	A few blue flashes and then final green	The remote control is communicating correctly with the lock, the possible problem lies elsewhere.
	A few blue flashes and then final red	The remote control is not paired with the lock, or it has a pairing password different from the lock, or it is disabled. Check the settings in the lock with the myDOOR app.
	Fixed red LED	The remote control has been switched to update mode. To reset the remote control, go to the main screen "My Doors" of the myDOOR app, and press the button in the bottom left-hand menu UPDATE FIRMWARE (or UPDATE SYSTEM). Then select the item "Remote control" and proceed by completing the update.
	The LED does not light up	Replace the battery. In the event that the problem persists contact technical support.
	Red LED flashing	Possible fault, contact technical support.

## FAQ

### **Why does the battery not reach 100% even when charged?**

*To preserve battery life, an algorithm has been developed that takes into account the charge condition of the battery to decide whether to start the charging cycle, if the battery is over 90% charged when the door is closed, the charging procedure is not started, in this way the battery life cycle is extended, not stressing it with continuous and superfluous recharging cycles*

### **After opening the latch with the motor, if the latch is kept manually retracted beyond its release time, a failure alarm is given on the sensors of the latch, is this normal?**

*Yes, in fact, keeping the latch retracted manually prevents the lock from performing the latch release cycle, unable to ascertain that the cycle has been successful, the interpretation given by the lock, not knowing that there is manual intervention, is that of having an anomaly on the sensors detecting the position of the latch.*

### **When trying to connect to the lock from the list of search results, the pairing password entry screen is not shown?**

*It is advisable to make attempts by unpairing and pairing and unpairing the lock again from the phone's Bluetooth menu and then try again with the App. If the problem still persists after this, try restarting the phone*

### **How do you know if a Bluetooth remote control is dead?**

*If at the time of activation with the button, the LED on the remote control no longer gives any signal, it means that the battery should ideally be replaced. In fact from that moment on, there are about a thousand activations left before the remote control stops communicating with the lock*

### **The lock does not accept impulses after manually opening / closing the bolts with the mechanical key?**

*If the mechanical key is used to actuate the bolts, the lock does not accept impulses for 20 seconds (period settable by the technician) from the moment in which the movement of the bolts started, this is to avoid that during mechanical use impulses may arrive by error that cancel the mechanical opening / closing objective.*

## FAQ

### ***Why does the accessory (fingerprint reader/numeric keypad) fitted on the door switch off when the door is not mains powered but battery powered?***

*To reduce consumption, the accessory devices switch off when there is no mains, in order to switch them on simply knock firmly in the area below where the key is inserted, or in any case on the lock side at about 1 meter from ground. Once on they will remain powered for 60 seconds for use, at the end of the 60 seconds they will turn off again.*

### ***The lock makes noises as if it were trying to engage with the gears?***

*It is possible in certain conditions, for example if the knob of the cylinder remains turned in an abnormal position or it could happen after manually opening/closing the lock. In any case, the lock is designed to detect this anomaly and attempt to engage the gears with a well-defined procedure by reversing the direction of rotation (up to 3 times for the single event).*

### ***After updating the Stack and Application, the card doesn't exit the bootloader mode?***

*Attention, when updating both the Stack and the Application it is necessary to carry out the procedure twice, the first time the Stack is updated, after which the search for the card is shown again in bootloader mode in order to load the Application, if the application is not loaded as well the card remains in bootloader mode.*

### ***Is the door sensor not read precisely or constantly from the lock?***

*Try to adjust the latches on the lock, if this does not solve the problem then check that the card connected to the contact on the frame is well fixed with the 2 screws.*

### ***In case of fingerprint reader/numeric keyboard, is the start time of the opening cycle long, after having accepted the fingerprint/code?***

*You must adjust the time of the pulse that is given to the device by using specific instructions.*

### ***Are there any pairing problems with the device?***

*Unpair it from the device list, empty the App cache and retry. If the problem persists, turn the telephone on and off. The problem is not caused by the App and by the Dierre device, but by the phone itself, for this reason in the worst scenario you must restart it.*

## FAQ

***Following a research, does the icon keep revolving but the pairing pop-up does not appear?***

*The telephone is not automatically displaying the pop-up, access the notifications on your device to give confirmation to proceed with the pairing. You can generally access the notifications by dragging the telephone screen from the highest point to the lowest.*

THE ITALIAN STYLE DOOR

**Dierre**

YOUR HOME, YOUR LIFE



w w w . d i e r r e . c o m

DIERRE SPA STRADA STATALE PER CHERI 66/15 - 14019 VILLANOVA D'ASTI (AT)  
TEL. +39 0141 949411 - FAX +39 0141 946427 - E-MAIL: info@dierre.it

Edition N° 2 Rev 8 (Date 03/2025 G.C.)